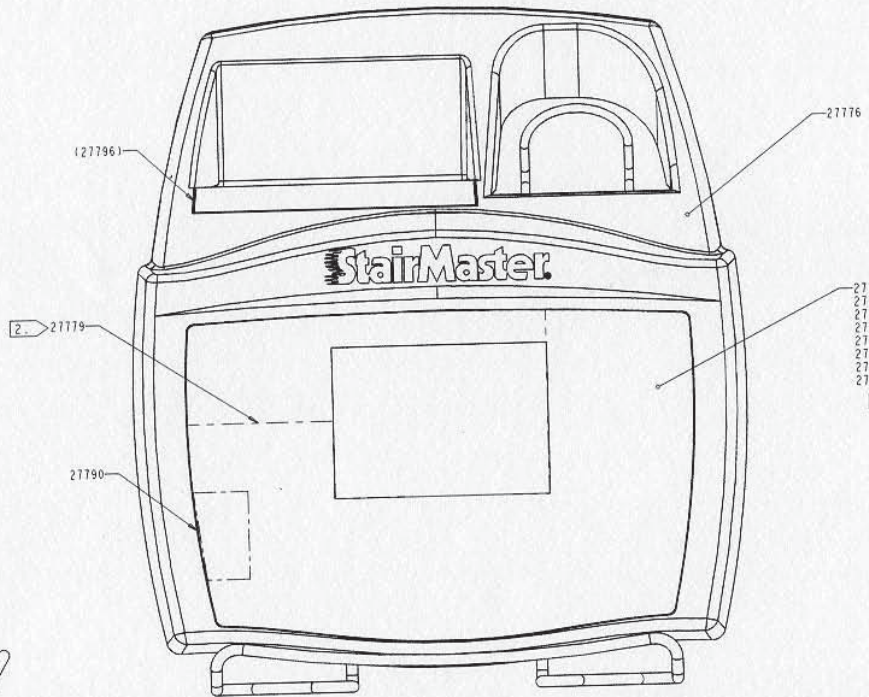
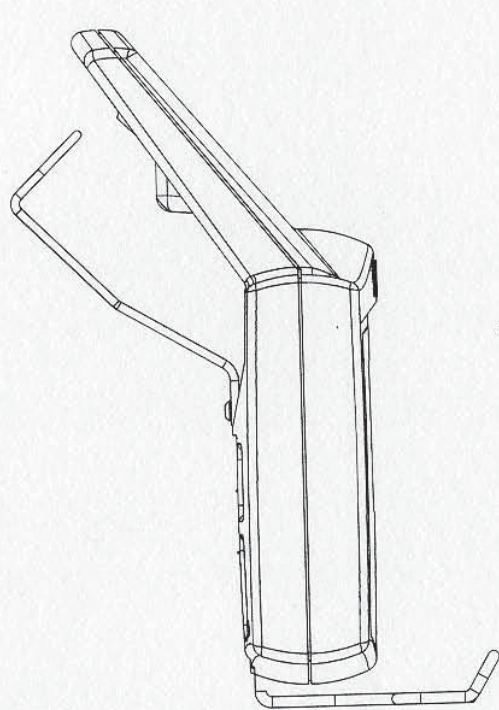


**STAIRMASTER
7000PT Stepmill
Parts Diagram**

2003 – 2005

Pages 2-10



- 27780-001
- 27780-002
- 27780-003
- 27780-004
- 27780-005
- 27780-006
- 27780-007
- 27780-009

CONFIDENTIAL & PROPRIETARY
 THIS DOCUMENT IS THE PROPERTY OF
 STAIRMASTER SPORTS/MEDICAL PRODUCTS, INC.
 FILE SHEET 1 FOR FIG. 1274

StairMaster

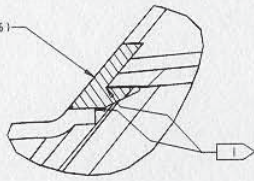
VIEW: **D** DWG NO.: **27819**

SCALE: 3/8" = 1" PLOT DATE: 8/10/05 SHEET 2 OF 3

PRO/ENGINEER GENERATED DRAWING
 FILE NAME: 27819.DWG

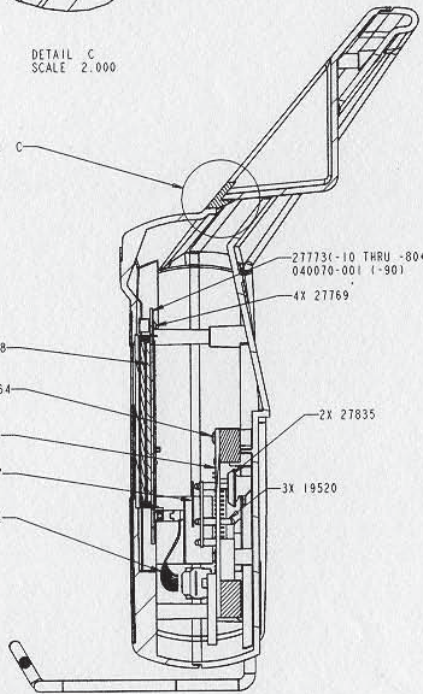
8 7 6 5 4 3 I

(27796)



DETAIL C
SCALE 2.000

SEE DETAIL C



SECTION B-B

27773(-10 THRU -80+-99)
040070-001 (1-90)

4X 27769

27778

5X 27764

27767

27834

2X 27835

3X 19520

4 27783

27782

25244

27777

4 27791

B

2X 25627

StairMaster

2X 22276

2X 22276

22375

D

C

B

A

8 7 6 5 4 3 I

CONFIDENTIAL & PROPRIETARY THIS DOCUMENT IS THE PROPERTY OF STAIRMASTER SPORTS/MEDICAL PRODUCTS, INC. (SEE SHEET 1 FOR FULL TEXT)				DATE D	REV 000	27819	REV A
DRAWN		SCALE: 0.800		PLT DATE: 8/18/05		SHEET 3 OF 3	
				PRO/ENGINEER GENERATED DRAWING		FILE NAME: 27819.DWG	

8

7

6

5

4

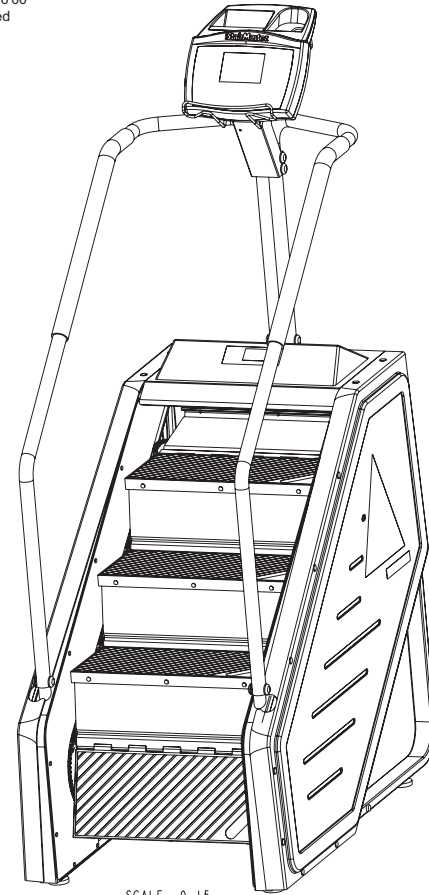
3

1

BOM FOR ASSEMBLY 10869		
COMPONENT	DESCRIPTION	QTY
10037	ADJUSTER, BEARING, STEPMILL	4
10059	BRACE, TRANSMISSION, STEPMILL	1
10205	WELDMENT, SPROCKET, LOWER, STEPMILL	1
10791	BRACKET, CONSOLE MOUNT	1
10860	BRACKET, TRANS, STEPMILL	1
15034	GROMMET, .88	1
19536	CARDBOARD, SHIPPING CORNER	2
20001	REDUCER, SPEED	1
20007	SPROCKET, IDLER, 15T	1
20012	BEARING, PILLOW BLOCK	4
20017	LEVELER, LEG	4
20034	STUD, 3/8-16 X 2 1/4 LG	8
20036	WHEEL, TRANSPORT	2
20047	COTTER, HAIRPIN PLATED	2
20054	SPRING, IDLER ARM	1
20114	SPACER, ALTERNATOR	1
20202	BELT, POLY-V, 200J6	1
20205	ALTERNATOR	1
20473	TYRAP, 1/8 X 4	4
20508	FASTENER, PUSHNUT	80
20547	BRACKET, TRANSMISSION, STEPMILL	1
20693	ARM, IDLER, STEPMILL	1
20808	PAD, RUBBER, TRANSMISSION	1
21247	PULLEY, ALTERNATOR, POLY-V	1
21304	PANEL, BACK, PRESSURE FORMED	1
21363	FASTENER, CHRISTMASTREE, PLASTIC	24
21395	ASSY, STEP WELDMENT, 3 HOLES, 7000 PT	8
21398	TREAD, STEP, 3 HOLES, 7000 PT	8
21767	RIVNUT, .312-18 UNC	4
21768	ASSY, MAIN POWER HARNESS, V2, 7000 PT	1
21769	ASSY, MAIN CABLE, C2, V2, 7000 PT	1
22026	SCREW, .25-20 X 1.00, HEX	2
22027	WASHER, .250 SPLIT LOCK	4
22028	SCREW, 1/4-20 X .63, HEX HD CAP	4
22029	NUT, .375-16, NYLON INSERT	8
22030	WASHER, 3/8 USS FLAT	9
22032	NUT, 5/16-18 NC NYLON INSERT HEX	8
22036	NUT, .25/20 NYLON INSERT	8
22037	SET SCREW, .25-20X.38	2
22038	WASHER, .250 USS FLAT	4
22039	SCREW, .375-16 X 1.00, HEX SOC	4
22042	NUT, .50-13, NYLON INSERT	2
22043	SCREW, 1/2-13 X 2.00, HEX HD CAP	1
22071	SCREW, .312-18 X 1.00, BTN HD, HEX SOC	8
22072	SCREW, SET, 5/16-24 X .38 HEX SOC	2
22075	WASHER, .312 USS FLAT	1
22086	RIVET, PANEL	36
22091	WASHER, .50, SAE FLAT	2
22097	SCREW, 3/8-16 X 3.25, HEX HD CAP	1
22109	WASHER, #8 INTERNAL TOOTH LOCK	1
22110	NUT, #8-32, HEX	1
22128	WASHER, .312 ID, .562 OD	32
22134	SCREW, #8-32 X .38, PHIL PAN HD	1
22139	SCREW, 1/4 X .50, SELF TAPPING	2
22146	SCREW, .312-18 X 1.25, HEX HD CAP	1
22154	NUT, 5/16-18, SERRATED FLANGE	4
22162	SCREW, .250-20 X .75, HEX HD CAP	4
22164	SCREW, 1/4-20 X 1.25, HEX HD CAP	2
22213	WASHER, FINISHING, .375	10
22323	CAP, FINISHING	10

BOM FOR ASSEMBLY 10869		
COMPONENT	DESCRIPTION	QTY
22427	SCREW, .25-28 X .25, SET	8
22435	GROMMET, .25 ID X .44 OD	2
22543	ASSEMBLY, PANEL, MAIN, LEFT, 7000 PT	1
22546	ASSEMBLY, PANEL, MAIN, RT, 7000 PT (V2)	1
22548	PANEL, TOP, PRESSURE FORMED (V2)	1
22563	PANEL, BOTTOM, PRESSURE FORMED (V2)	1
22663	SCREW, #6 X .50, PHIL TYPE T	4
22848	PLATE, BEARING, STEPMILL, V2	2
22849	SHAFT, STEP, 7000 PT, V2	8
22933	ASSY, RELAY/RESISTOR, 7000 PT	1
22937	SCREW, 3/8-16 X 3.50, HEX HD CAP	2
22946	ASSEMBLY, HANDRAIL, RT, 7000 PT	1
22947	ASSEMBLY, HANDRAIL, LEFT, 7000 PT	1
22983	WASHER, SHOULDER, .25 ID	2
23015	RING, SNAP, .31	16
23082	BEARING, 608 2Z	16
23257	CHAIN, DRIVE, #40 X 41 1/2 LG	1
23424	WELDMENT, SPROCKET, UPPER, STEPMILL	1
23427	SPROCKET, 12 TOOTH, #40	1
23792	SADDLE, WIRE	7
24323	CLIP, CABLE, ADHESIVE BACKING	1
24439	PIN, CLEVIS, .50 DIA X 4.50	2
24529	WELDMENT, FRAME, 7000 PT	1
24638	PANEL, INSIDE, RH, 7000 PT	1
24639	PANEL, INSIDE, LH, 7000 PT	1
24640	SCREW, 3/8-16 X 1.75, HEX HD CAP	2
24643	NUT, .375-16, HEX JAM, NYLON INSERT	5
24662	PULLEY, TRANSMISSION, POLY-V, 7000 PT	1
24663	GROMMET, 1.13 OD X .63 ID	1
24757	RIVET, PLASTIC, PERM, 7000 PT	23
25439	LINK, MASTER, #40	3
25454	SCREW, .25-20 X .75, HEX	4
26669	SCREW, .500-13 X 4.50, HEX HD CAP	1
27268	ASSEMBLY, CHAIN, STEP DRIVE, 7000PT	2
27831	ASSY, CONSOLE, CABLE, 7000 PT, C40	1
(27775)	CONSOLE ASSEMBLY, C40	1

Digitally signed by CATHEY CLARK
 cn=CATHEY CLARK,
 o=STAIRMASTER, c=US
 Date: 2003.02.12 15:26:23 -0600
 Reason: Document is released



SCALE 0.15

NOTES:

- 1. KEY IS INCLUDED WITH SPEED REDUCER (ITEM 87).
- 2. REMOVE BEARING SET SCREWS AND INSTALL LOCKING PATCH SET SCREWS (ITEM 22427) TORQUE TO 80 IN. LB.
- 3. MODEL LEVEL ITEM, REFERENCE MODEL LEVEL DRAWING (P/N 99700).
- 4. TENSION BELT TO 50 LB. BELT SHOULD DEFLECT .100 IN. WHEN 3 LBS. IS APPLIED TO CENTER OF THE BELT SPAN.
- 5. APPLY LOCTITE 242 (BLUE) TO THREADS.
- 6. TORQUE TO 80 IN. LB.

TOLERANCES		UNLESS OTHERWISE SPECIFIED:	
.X ±.1	ANGLES:	1. DO NOT SCALE DRAWING	PROOF/PUR MGR
.XX ±.03	BENT ±.2"	2. ALL DIMENSIONS ARE IN INCHES	MFG. ENGR
.XXX ±.010	MACHINED ±0°30'	3. ALL DIMENSIONS APPLY BEFORE PLATING OR COATING	DESIGN. ENGR
CONFIDENTIAL & PROPRIETARY		4. REMOVE ALL BURRS BREAK SHARP EDGES. .020 MAX ALL MACHINED SURFACES	ENGR. MGR
THIS DOCUMENT IS THE PROPERTY OF STAIRMASTER SPORTSMEDICAL PRODUCTS, INC. IT MAY NOT BE REPRODUCED IN WHOLE OR IN PART, PROVIDED TO THIRD PARTIES, OR USED FOR ANY PURPOSE OTHER THAN THE PERFORMANCE OF WORK FOR STAIRMASTER, WITHOUT WRITTEN AUTHORIZATION. ALL RIGHTS ARE RESERVED INCLUDING COPYRIGHTS.		5. ALL VIEWS 3RD ANGLE PROJECTION	MATERIAL

REVISIONS			
REV	DESCRIPTION	DATE	DRAFTER
AC	REVISED PER ECO #3488	4/4/97	DP
△	REVISED PER ECO #3540	6/25/97	VF
△	REVISED PER ECO #3631	6/25/97	VF
△	REVISED PER ECO #3685	11/5/97	VF
△	REVISED PER ECO #3753	2/6/98	VF
△	REVISED PER ECO #4147	10/7/98	VF
△	REVISED PER ECO #4152	11/6/98	VF
△	REVISED PER ECO #4175	11/6/98	VF
△	REVISED PER ECO #4292	2/26/99	DH
△	REVISED PER ECO #7023	6/23/99	RH
△	REVISED PER ECO #7068	7/27/99	BH
△	REVISED PER ECO #7221	11/10/99	RH
△	REVISED PER ECO #7368	3/30/00	RH
△	REVISED PER ECO #7558	7/26/00	RH
△	REVISED PER ECO #7679	10/18/00	RH
△	REVISED PER ECO #7912	2/22/01	RH
△	REVISED PER ECO #808702	8/23/01	RH
△	REVISED PER ECO #8071	8/24/01	KF
△	REVISED PER ECO #8217	11/15/01	RH
△	REVISED PER ECO #8268	1/22/02	RH
△	REVISED PER ECO #8274	1/19/02	RH
△	REVISED PER ECO #8288	1/29/02	RH
△	REVISED PER ECO #8305	2/19/02	RH
△	REVISED PER ECO #8320	4/30/02	RH
△	REVISED PER ECO #8367	6/17/02	RH
△	REVISED PER ECO #8385	8/15/02	RH
△	REVISED PER ECO #8411	9/24/02	RH
△	REVISED PER ECO #8495	1/7/03	RH
△	REVISED PER ECO #8509	1/28/03	RH

COVER/FINISH CHART		
P/N	DASH #	COVER/FINISH
10869	-00	N/A
	-01	BLACK COVER, WHITE POWDERCOAT
	-11	GREY COVER, WHITE POWDERCOAT
	-03	BLACK COVER, WRINKLE BLACK P/C
	-13	GREY COVER, WRINKLE BLACK P/C

* SUFFIX DETERMINED BY P/N #10858

StairMaster HEALTH & FITNESS PRODUCTS, INC.

ASSEMBLY, FINAL,
7000 PT

SIZE: 10869
 RELEASED FOR PRODUCTION
 ECO 252

SCALE: 0.200 PLOT DATE: 11/28/03 SHEET 1 OF 6

PRO/ENGINEER GENERATED DRAWING
 FILE NAME: 10869.DWG

8

7

6

5

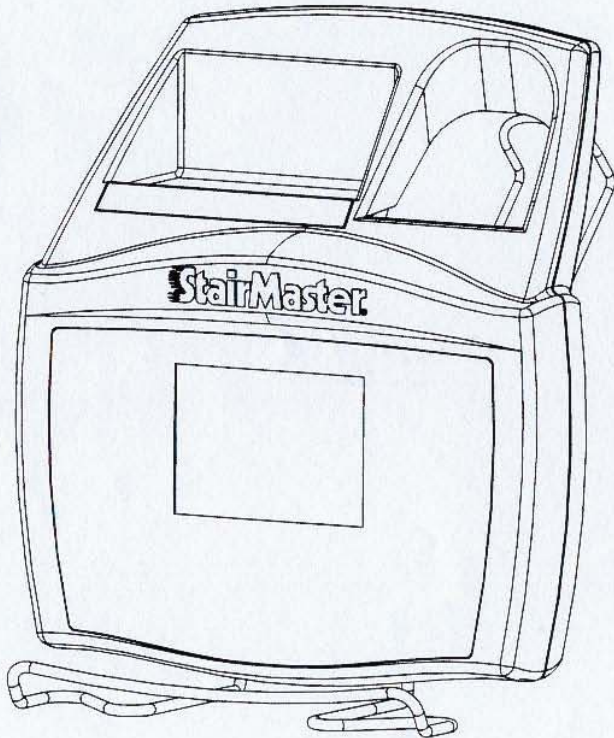
4

3

NOTES: UNLESS OTHERWISE SPECIFIED

1. SEAL 27796, SUPPORT, AFTER ASSEMBLING, FROM INSIDE OF HOUSING USING A CONTINUOUS BEAD OF 27849, HOT MELT.
2. ASSEMBLE 27779, MEMBRANE SWITCH, TO 27776, FRONT CONSOLE, FIRST, THEN ASSEMBLE 27780, OVERLAY, TO MEMBRANE SWITCH.
3. INSTALL 27778, WINDOW, WITH MATTE SIDE TOWARD OVERLAY (FACING OUT).
4. 27783 AND 27791 WIREFORM PARTS ARE SHOWN IN ASSEMBLED POSITION FOR REFERENCE ONLY AND ARE TO BE PACKAGED WITH ASSEMBLY.

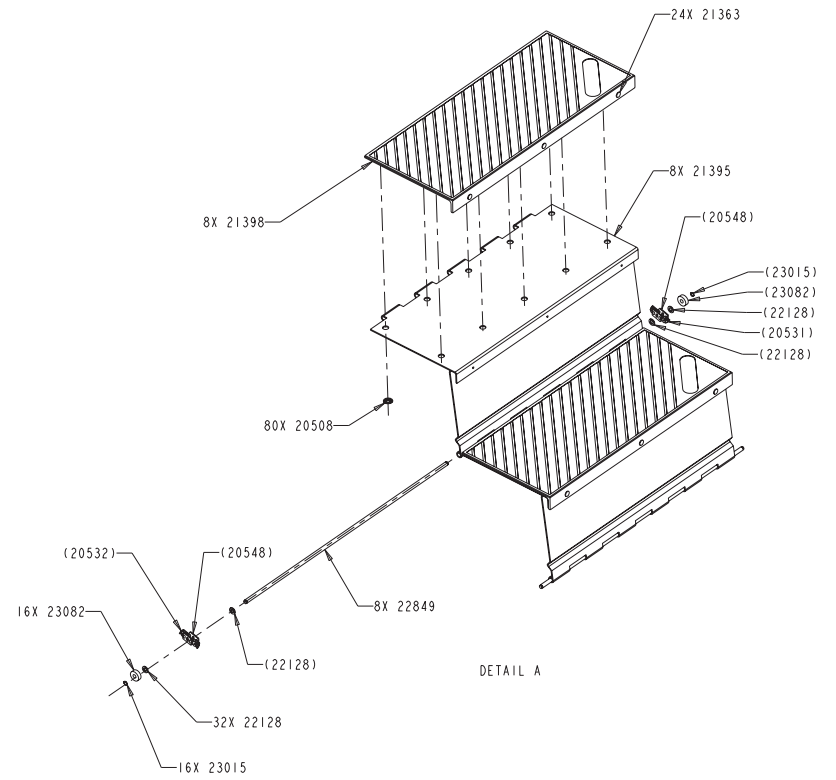
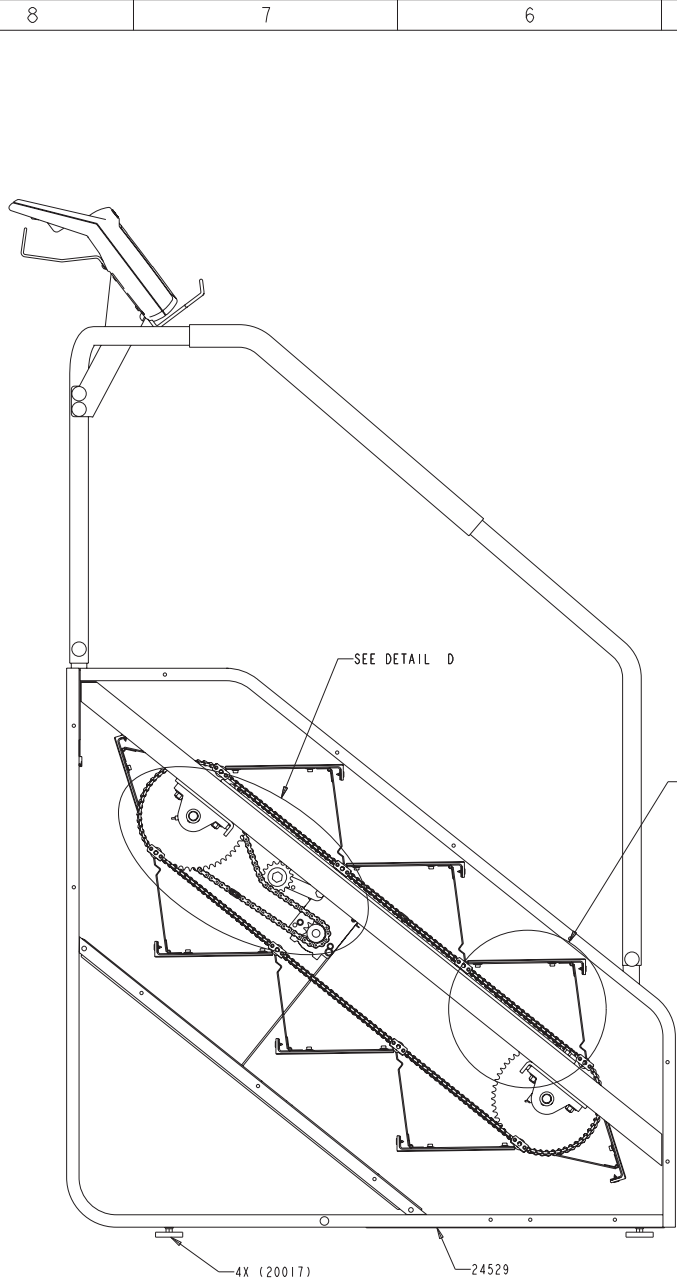
REV	DESCRIPTION	DATE	DRAFTER
A	RELEASED FOR PRODUCTION PER ECO #195801	2/22/01	BN
B	REVISED PER ECO #8012	5/14/01	BN
C	REVISED PER ECO #8029	8/6/01	BN
D	REVISED PER ECO #8029	10/02/01	MJ
E	REVISED PER ECO #8170	10/24/01	BN
F	REVISED PER ECO #8314	3/13/02	BN
G	REVISED PER ECO #8333	4/15/02	BN
H	REVISED PER ECO #8337	8/21/02	BN
I	REVISED PER ECO #8412	12/17/02	BN
J	REVISED PER ECO #8545	5/8/03	BN
K	REVISED PER ECO #8900	12/11/03	BN
L	REVISED PER ECO #903300	1/21/04	BN
M	REVISED PER ECO #919700	5/13/04	BN
N	REVISED PER ECO #954900	5/31/05	BN
O	REVISED PER ECO #919300	8/10/05	BN



BOM FOR ASSEMBLY 27619											DESCRIPTION	QTY
-99	-90	-80	-70	-60	-50	-40	-30	-20	-10			
COMPONENT												
27834	27834	27834	27834	27834	27834	27834	27834	27834	27834	27834	ASSY, CABLE, C40 DISPLAY	1
27767	27767	27767	27767	27767	27767	27767	27767	27767	27767	27767	BOARD, ICHR	1
22375	22375	22375	22375	22375	22375	22375	22375	22375	22375	22375	DECAL, S/N, BC, 1.6 X 1.5	1
27790	27790	27790	27790	27790	27790	27790	27790	27790	27790	27790	FILLER, MEMBRANE SWITCH	1
	27780-009										GRAPHIC OVERLAY, C40, JAPANESE	1
27849	27849	27849	27849	27849	27849	27849	27849	27849	27849	27849	HOT MELT	AR
27776	27776	27776	27776	27776	27776	27776	27776	27776	27776	27776	HOUSINGS, CONSOLE, FRONT, C40	1
27777	27777	27777	27777	27777	27777	27777	27777	27777	27777	27777	HOUSING, CONSOLE, REAR, C40	1
27782	27782	27782	27782	27782	27782	27782	27782	27782	27782	27782	LABEL, OVAL, LARGE	1
27779	27779	27779	27779	27779	27779	27779	27779	27779	27779	27779	MEMBRANE SWITCH, C40	1
A 040070-001	040070-001	040070-001	040070-001	040070-001	040070-001	040070-001	040070-001	040070-001	040070-001	040070-001	PCBA, DISPLAY, C.J40	1
27130	27130	27130	27130	27130	27130	27130	27130	27130	27130	27130	PCBA, PROCESSOR, C40	1
27835	27835	27835	27835	27835	27835	27835	27835	27835	27835	27835	PLUG, BUTTON, 9/16 INCH	2
25244	25244	25244	25244	25244	25244	25244	25244	25244	25244	25244	SCREW, .250-20 X .50, BUTTON HD CAP	1
22276	22276	22276	22276	22276	22276	22276	22276	22276	22276	22276	SCREW, #6 SELFTAPPINGX.625 HEX OR TORX	4
27769	27769	27769	27769	27769	27769	27769	27769	27769	27769	27769	SCREW, #4-40UNCX1/4HEX SOC,BUTTON HD	4
27764	27764	27764	27764	27764	27764	27764	27764	27764	27764	27764	SCREW, #6-32UNCX3/8HEX SOC,BUTTON HD	5
A 40229-012	40229-012	40229-012	40229-012	40229-012	40229-012	40229-012	40229-012	40229-012	40229-012	40229-012	SOFTWARE, C.J40	1
19520	19520	19520	19520	19520	19520	19520	19520	19520	19520	19520	SPACER, NYLON, PCB	3
27796	27796	27796	27796	27796	27796	27796	27796	27796	27796	27796	SUPPORT, C40 CONSOLE	1
27778	27778	27778	27778	27778	27778	27778	27778	27778	27778	27778	WINDOW, C40	1
27783-02	27783-002	27783-02	27783-02	27783-02	27783-02	27783-02	27783-02	27783-02	27783-02	27783-02	WIREFORM ASSY, WATER BOTTLE	1
27791	27791	27791	27791	27791	27791	27791	27791	27791	27791	27791	WIREFORM, MAGAZINE RACK	1
								27780-001			GRAPHIC OVERLAY, C40, ENGLISH	1
											GRAPHIC OVERLAY, C40, SPANISH	1
											GRAPHIC OVERLAY, C40, GERMAN	1
											GRAPHIC OVERLAY, C40, FRENCH	1
											GRAPHIC OVERLAY, C40, ITALIAN	1
											GRAPHIC OVERLAY, C40, DANISH	1
											GRAPHIC OVERLAY, C40, SWEDISH	1
25627	25627	25627	25627	25627	25627	25627	25627	25627	25627	25627	4MM X 10MM SELF TAPPING, TORX PH SCREW	2
25456											GRAPHIC OVERLAY C40 GENERIC	1

Digitally signed by Cathy Clark
 Date: 2005.08.23 10:28:16 -0500
 Reason: Document is released
 Location: Tulsa, OK

TOLERANCES X ±.1 ANGLES: XX ±.03 BENT ±.03 XXX ±.010 MACHINED ±.030		UNLESS OTHERWISE SPECIFIED: 1. DO NOT SCALE DRAWING 2. ALL DIMENSIONS ARE IN INCHES 3. ALL DIMENSIONS APPLY BEFORE PLATING OF COATING 4. REMOVE ALL BURRS BREAK SHARP EDGES. QDR MAY ALL MACHINED SURFACES TO .005 5. ALL VIEWS 3RD ANGLE PROJECTION		PROOF/REV DATE ENG DATE MFG DATE SUPP	StairMaster HEALTH & FITNESS PRODUCTS, INC. TITLE CONSOLE ASSY, ICHR C40 MATERIAL N/A FINISH N/A	FILE RELEASED FOR PRODUCTION ECO #27619 SCALE: 8.000 PLOT DATE: 8/23/05 SHEET 1 OF 3 PRODUCTION GENERATED DRAWING FILE NAME: 27619.DWG
---	--	---	--	--	---	--



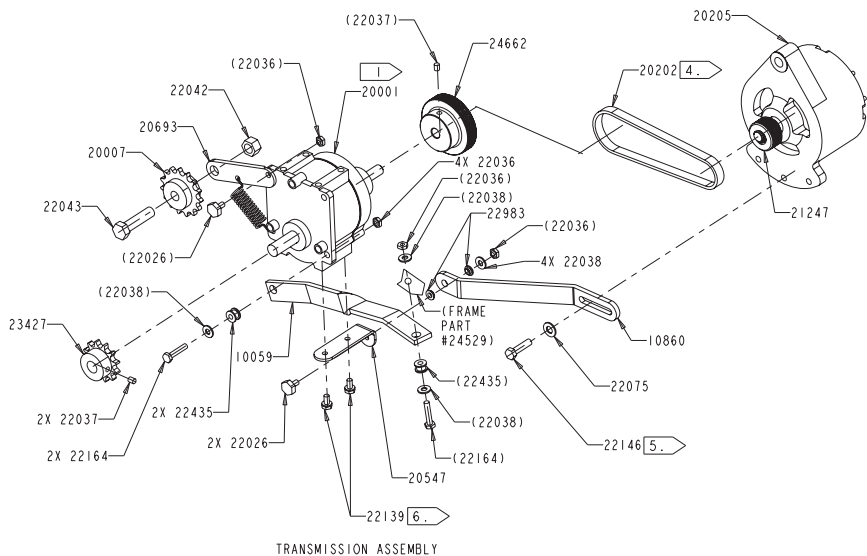
CONFIDENTIAL & PROPRIETARY
 THIS DOCUMENT IS THE PROPERTY OF
 STAINMASTER SPORTS/MEDICAL PRODUCTS, INC.
 (SEE SHEET 1 FOR FULL TEXT)

StainMaster
 PARTS/REPAIR PARTS

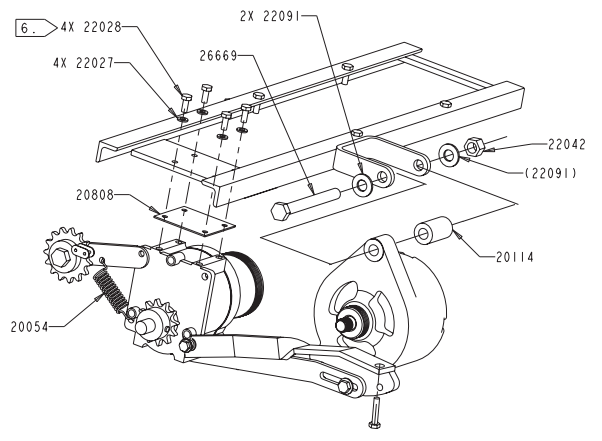
SIZE **D** DWG NO: **10869** VER. **6A**

DRAWER GRANT 3/9/89 SCALE: 0.200 PLOT DATE: 11/28/03 SHEET 2 OF 6

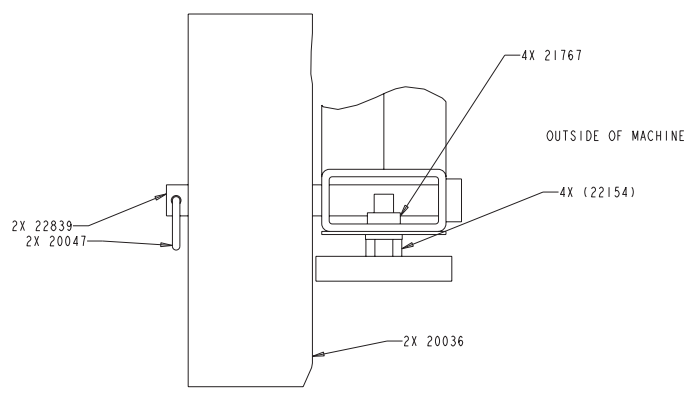
PRO/ENGINEER GENERATED DRAWING
 FILE NAME: 10869.DWG



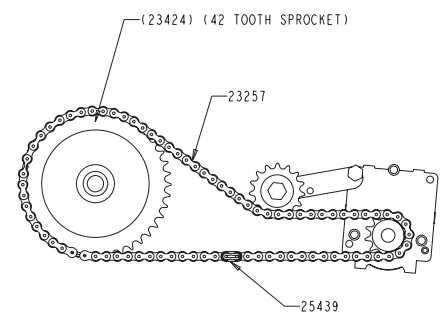
TRANSMISSION ASSEMBLY



TRANSMISSION ASSEMBLY MOUNTING TO FRAME
SCALE 0.35



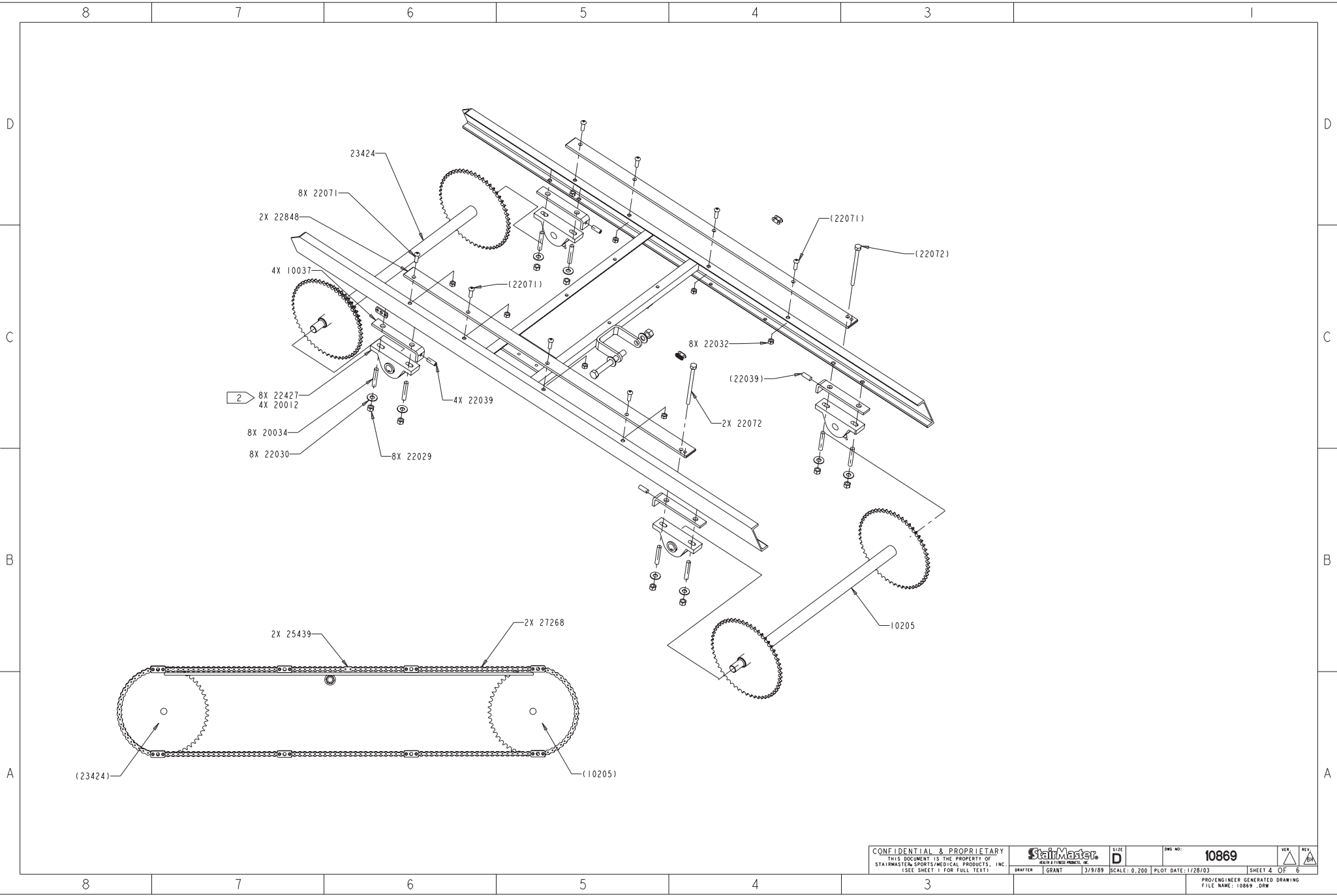
WHEEL ASSEMBLY
SCALE 1.00

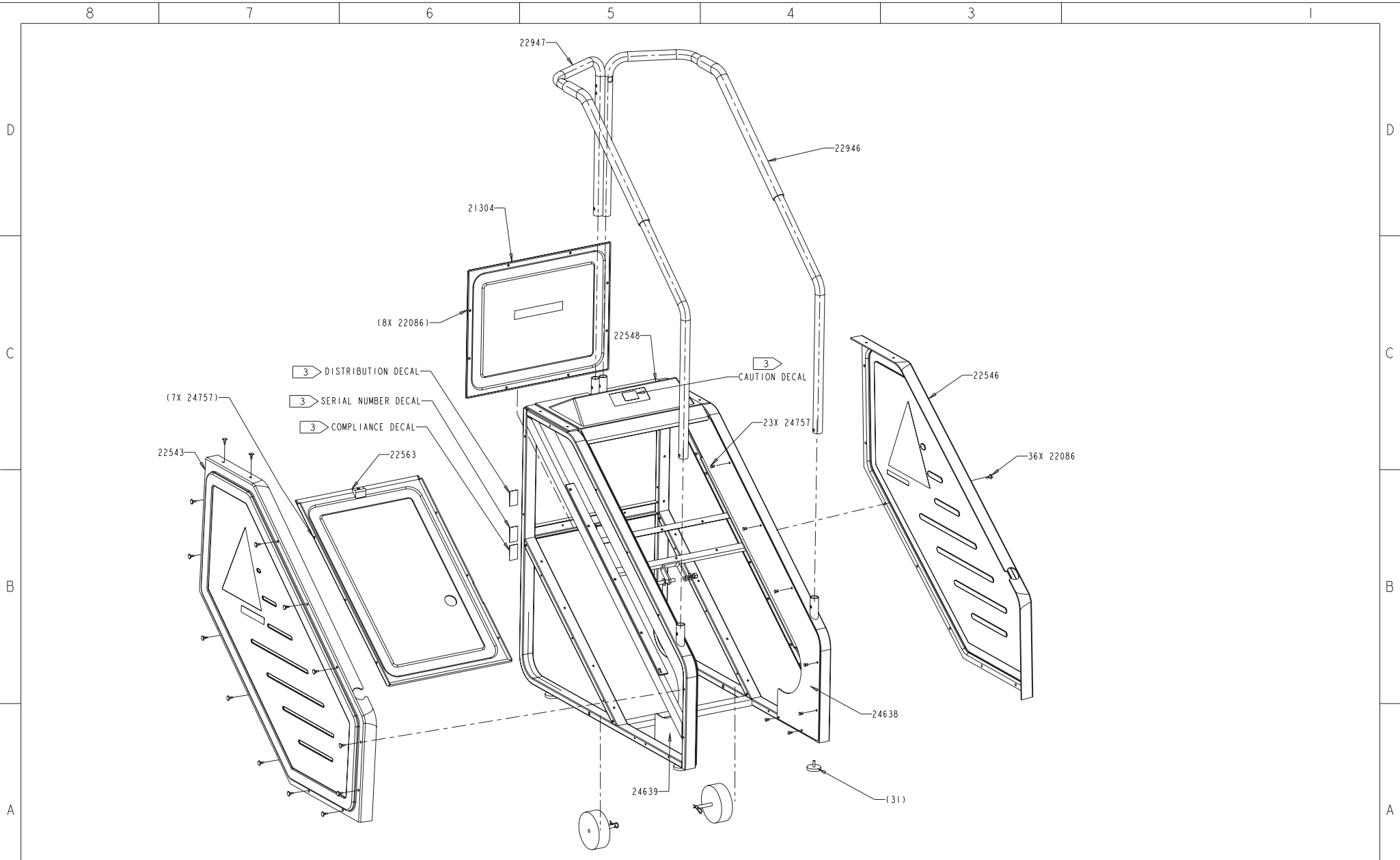


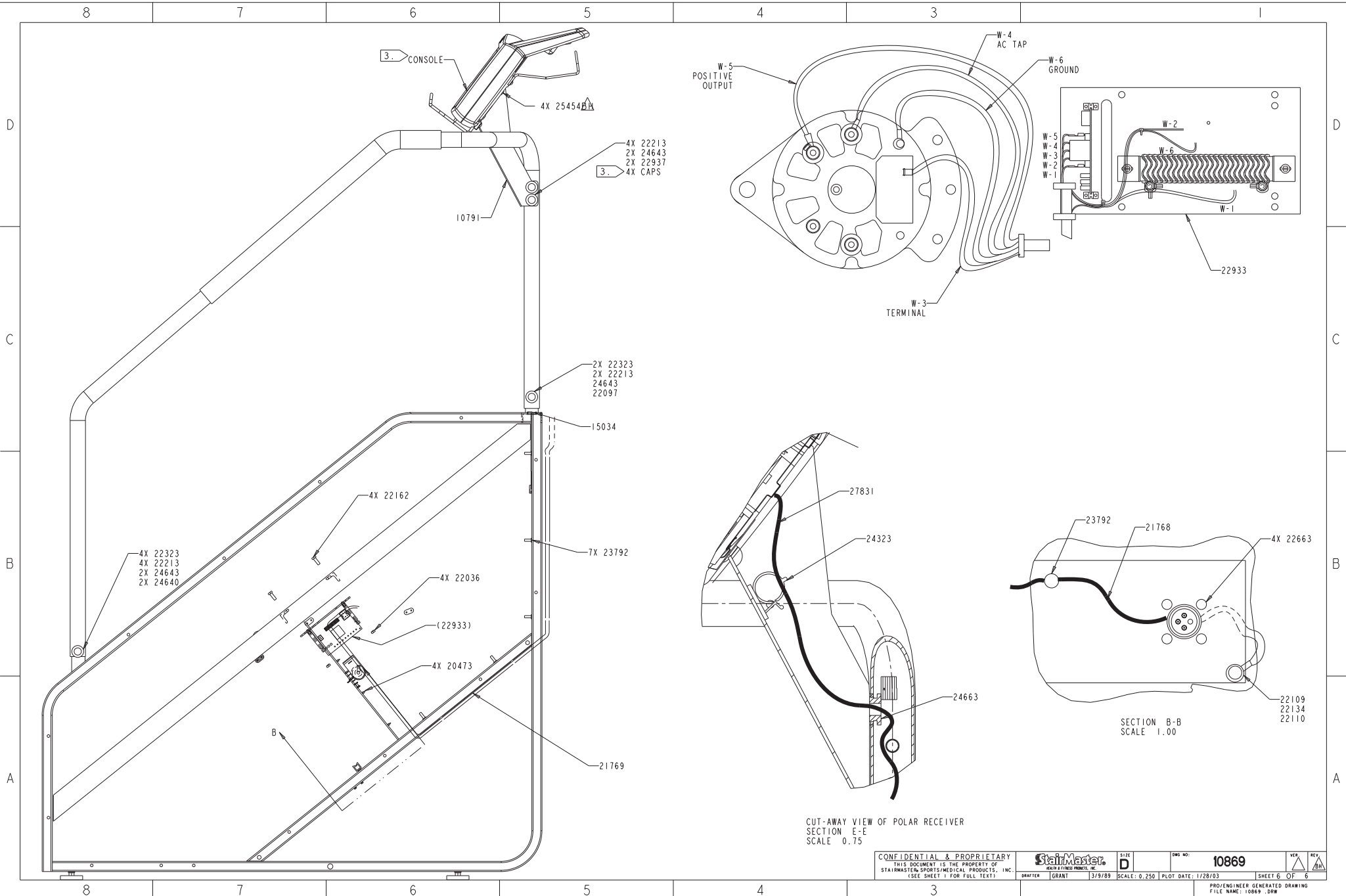
TRANSMISSION CHAIN ASSEMBLY
DETAIL D
SCALE 0.35

CONFIDENTIAL & PROPRIETARY THIS DOCUMENT IS THE PROPERTY OF STAINMASTER SPORTS/MEDICAL PRODUCTS, INC. (SEE SHEET 1 FOR FULL TEXT)		StainMaster SPORTS/MEDICAL PRODUCTS, INC.	SIZE D	DWG NO: 10869	VER. A	REV. A
DRAWN GRANT	3/9/89	SCALE: 0.200	PLOT DATE: 1/28/03	SHEET 3 OF 6		

PRO/ENGINEER GENERATED DRAWING
FILE NAME: 10869.DWG







CUT-AWAY VIEW OF POLAR RECEIVER
SECTION E-E
SCALE 0.75

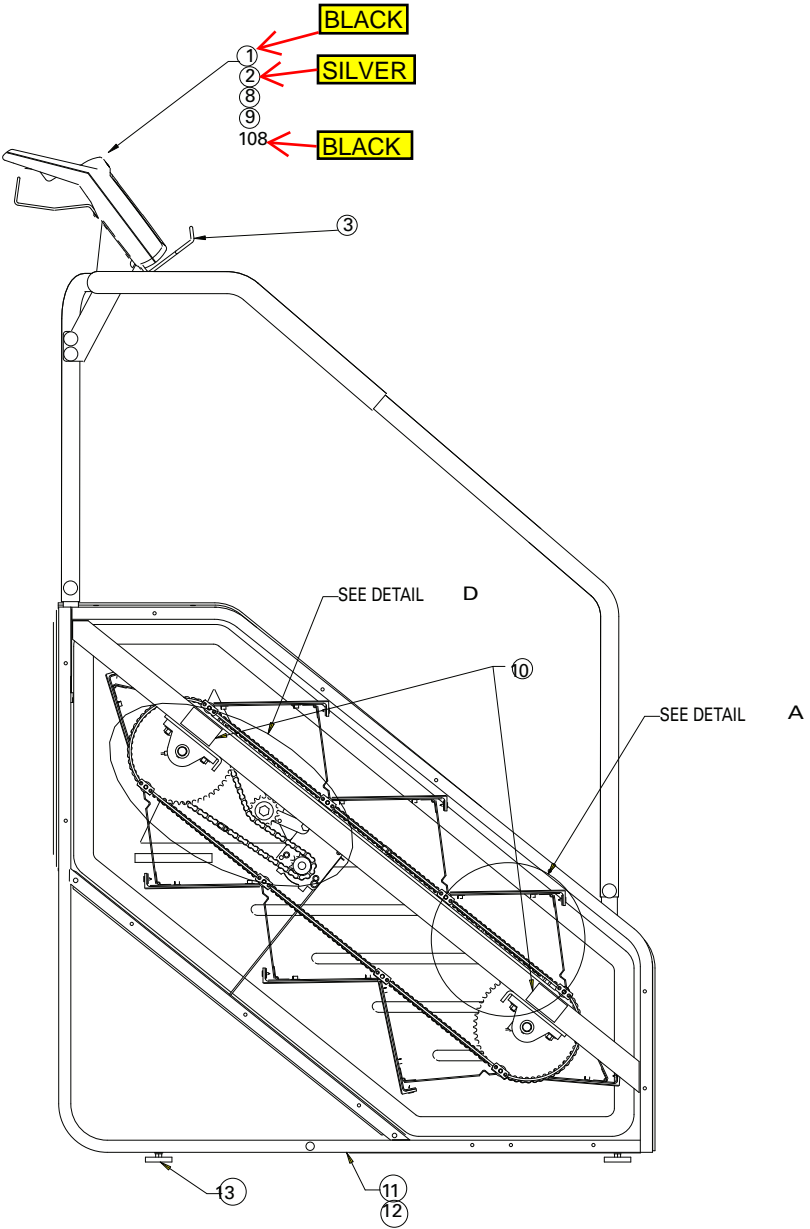
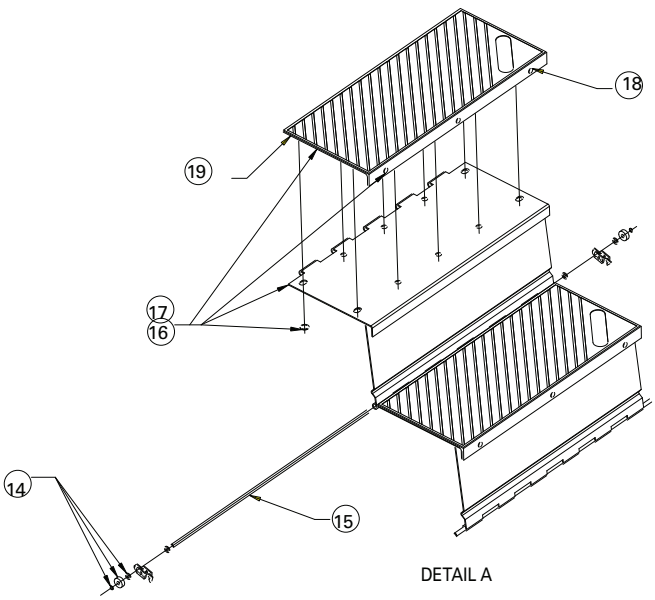
SECTION B-B
SCALE 1.00

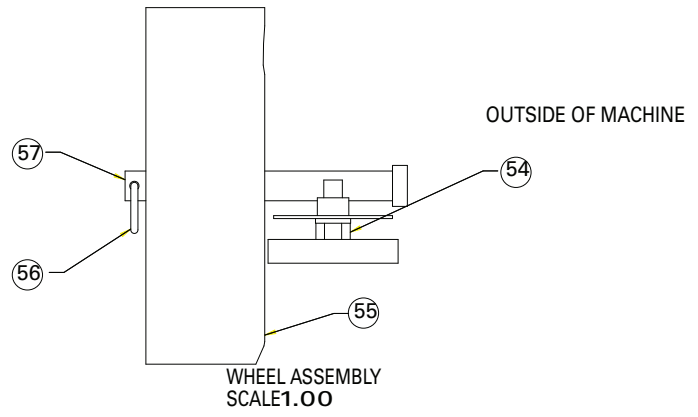
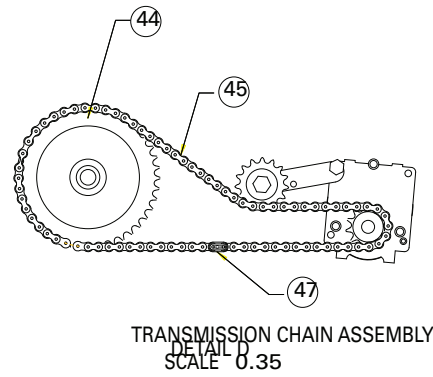
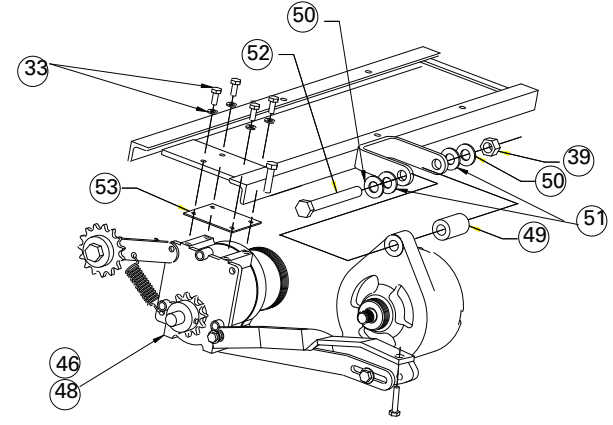
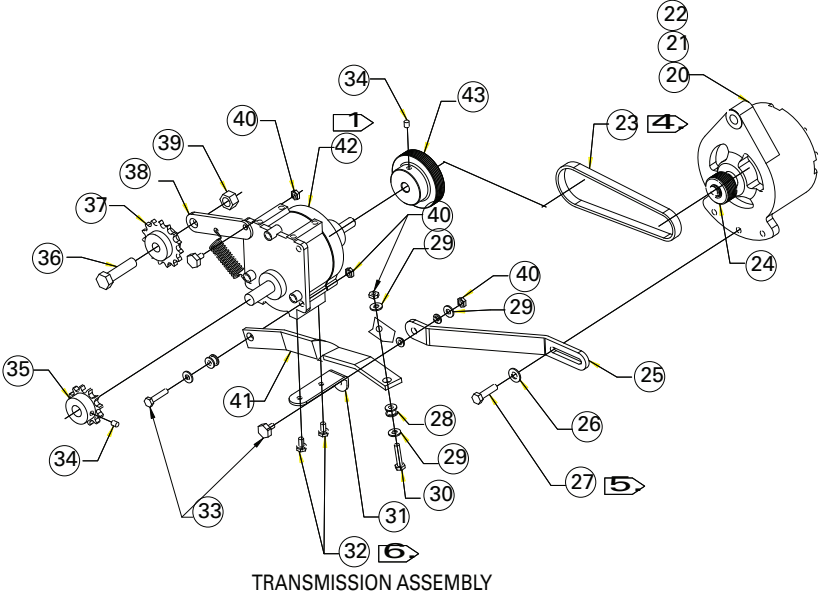
**STAIRMASTER
7000PT Stepmill
Parts Diagram**

2006

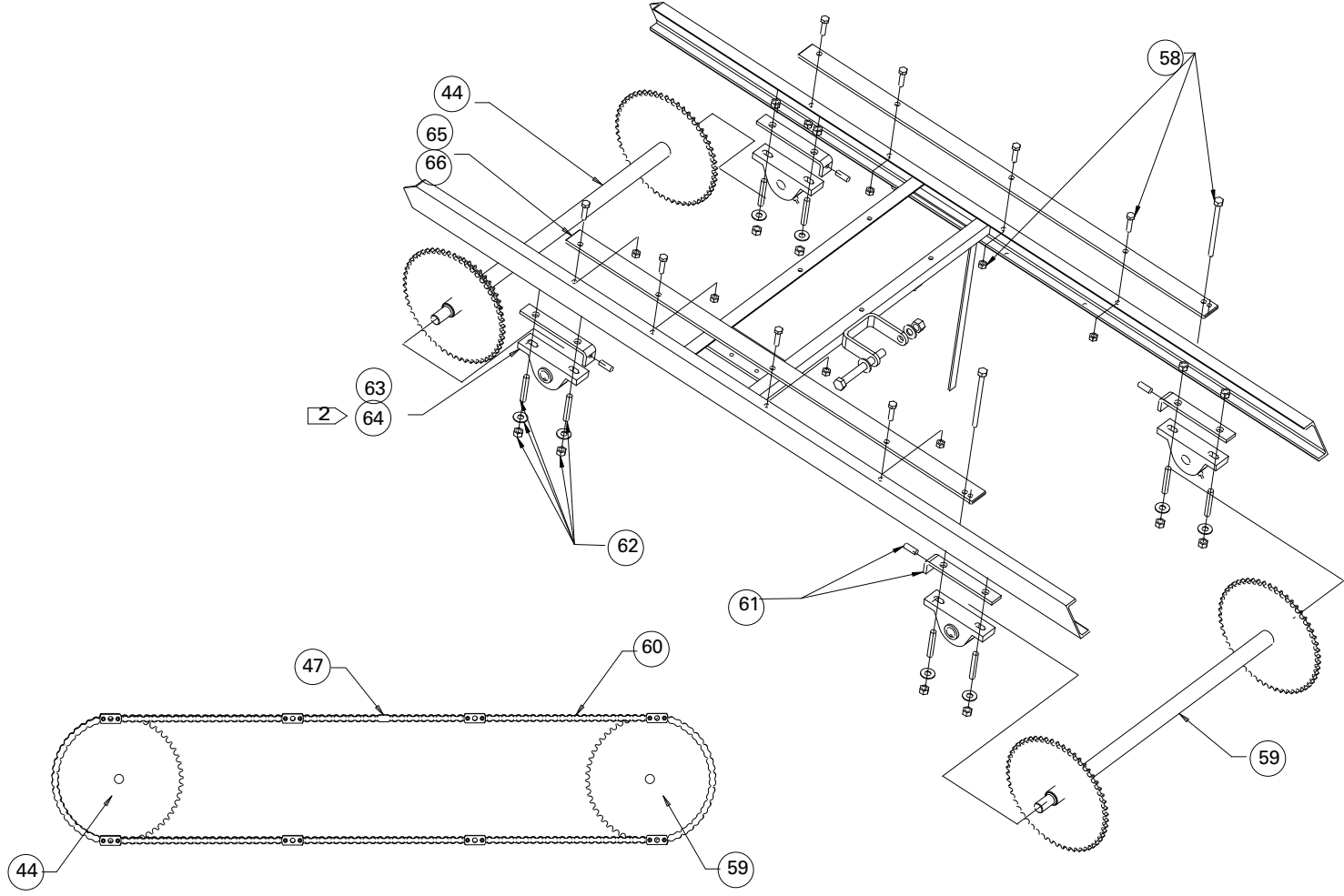
Pages 12 - 18

Stairmaster 7000PT

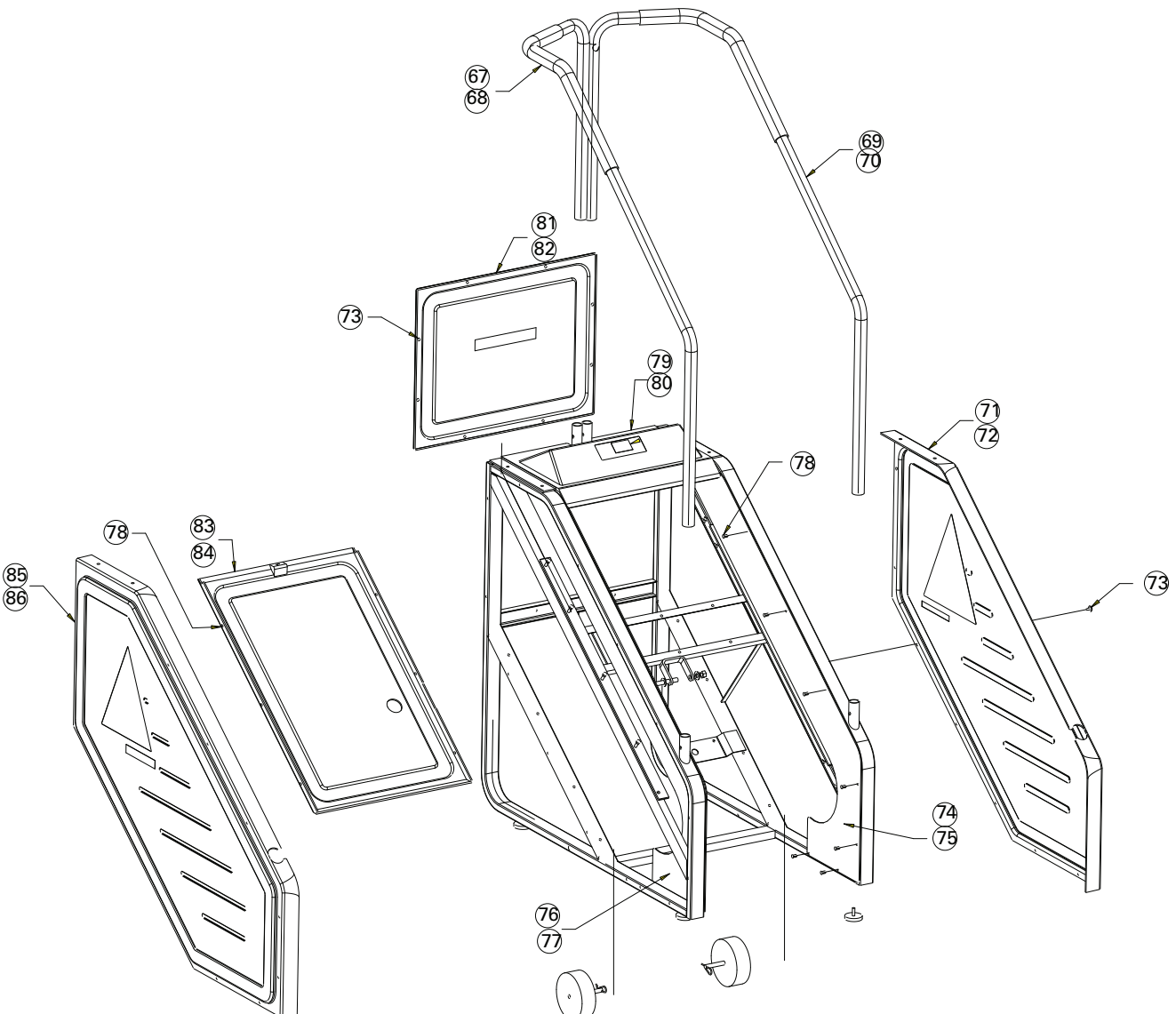


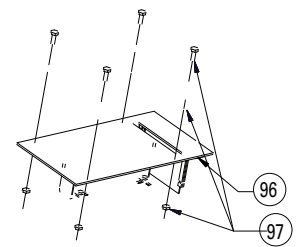
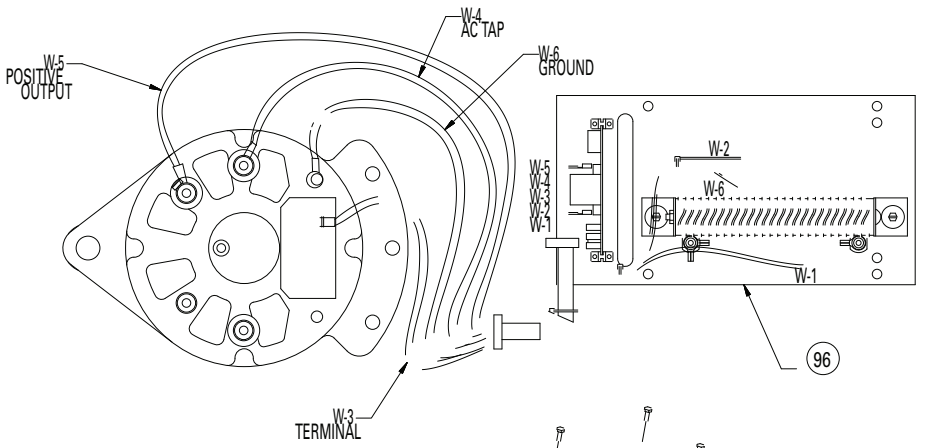
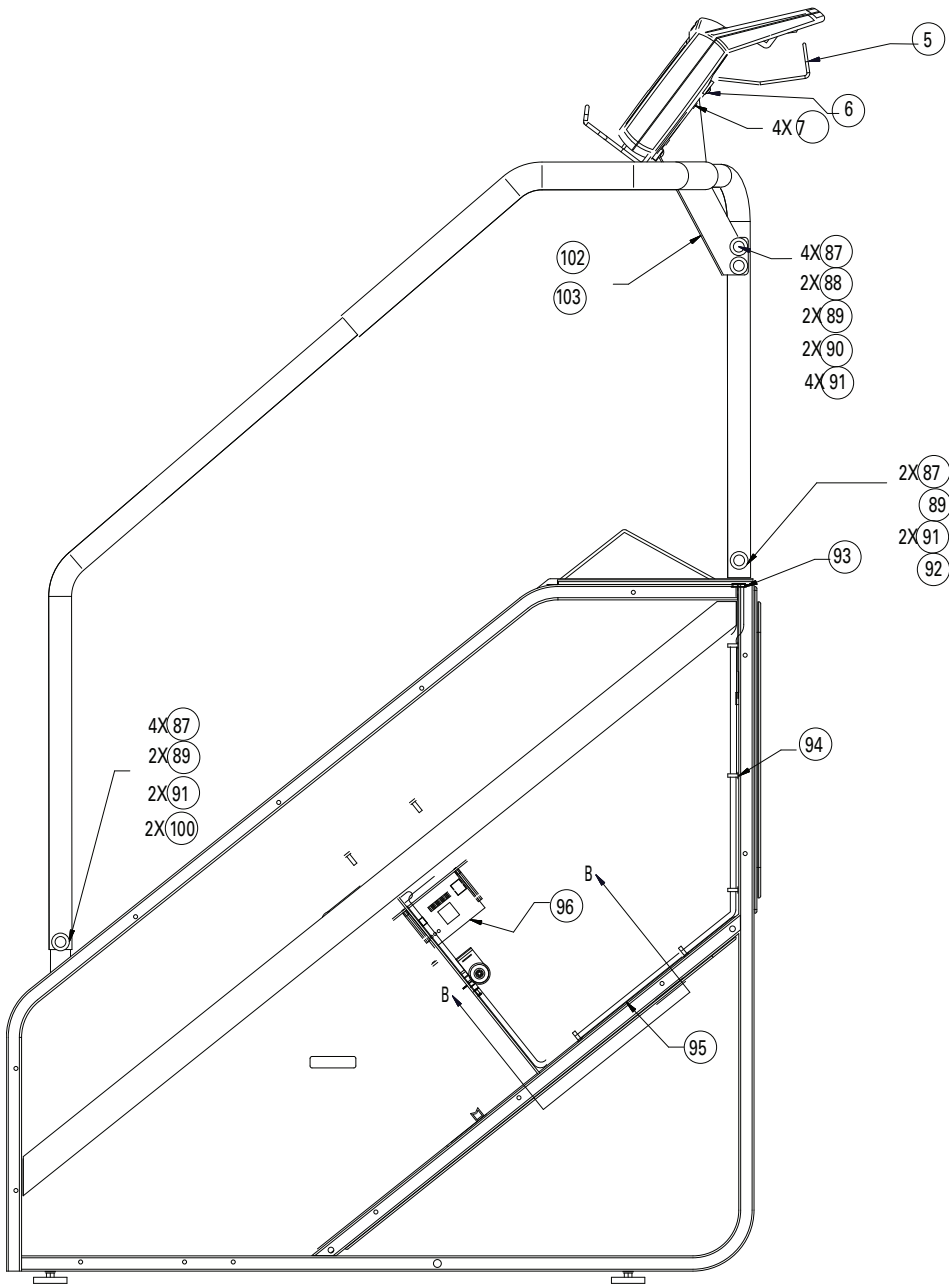


Stairmaster 7000PT

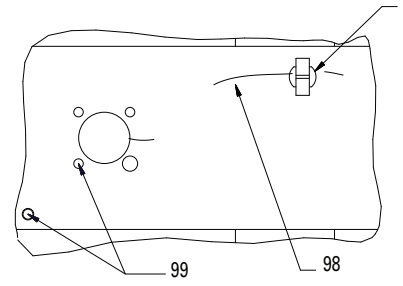
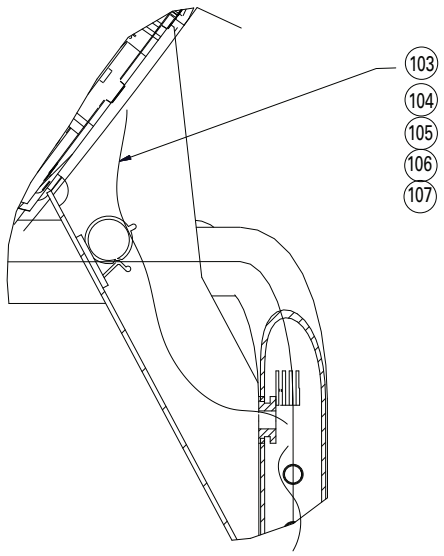


Stairmaster 7000PT





SCALE 0.250



Stairmaster 7000PT

Stairmaster 7000PT

REF #	DESCRIPTION	PART #	REF #	DESCRIPTION	PART #
1	ASSY, CONSOLE, C40 (ENG), BLACK	SM27775-20	50	WASHER,.50 SAE FLAT	SM22091
2	ASSY,CONSOLE,C40,NLS SILVER	SM25583	51	WASHER,SHOULDER,.38 I.D.	SM22191
3	WIREFORM,MAGAZINE HOLDER	SM27791-03	52	SCREW,.500-13X4.50,HEX HD CAP	SM26669
5	WIREFORM ASSY, WATER BOTTLE, BLACK	SM27783-03	53	PAD, RUBBER TRANSMISSION	SM20808
6	SCREW,.250-20X.50 BUTTON HD CP	SM25244	54	NUT, 5/16-18 SERRATED FLANGE	SM22154
7	CONSOLE BOLT KIT (4)	SM25454	55	WHEEL,TRANSPORT	SM20036
8	PCBA, DISPLAY, CJ40	SM40070-001	56	COTTER, HAIRPIN PLATED	SM20047
9	PCB ASSY,C40 PROCESS(M128)NON-	SM27130	57	PIN,CLEVIS,.50 DIA. X 5.00	SM22839
10	FOAM,PAD	SM36271-001	58	(CS) KIT,BEARING PLATE,HW,7000PT	SM25498
11	(CS) ASSY,FRAME,MAIN,7000PT,GREY	SM25492	59	WLDMNT,SPRCKT,LWR,STEP,W/B PWD	SM10205-03
12	(CS)ASSY,FRAME,MAIN,7000PT,BLACK	SM22538-03	60	ASSEMBLY,CHAIN,STEP DRIVE,7000	SM27268
13	LEVELER, LEG	SM20017	61	ADJUSTER,BEARING,STEPMILL,N/F	SM10037-03
14	(CS) KIT, STEP SHAFT,HW,7000PT	SM25496	62	(CS) KIT,PILLOW BLOCK,HW,7000PT	SM25862
15	SHAFT,STEP,7000 PT,V2	SM22849	63	SCREW,SET,SOCKET,.250-28 X .25	SM22427
16	(CS)ASSY,STEP W/TREAD,3 HOLES, GREY	SM25493	64	BEARING,PILLOW BLOCK	SM20012
17	(CS)ASSY,STEP W/TREAD,3 HOLES,BLACK	SM21396	65	PLATE,BEARING,STEPMIL (PRE 9/00)	SM20682
18	FASTENER,CHRISTMASTREE,PLASTIC	SM21363	66	PLATE,BEARING,STEPMILL,V2 (AFTER 9/00)	SM22848
19	TREAD,STEP,3 HOLES,7000 PT	SM21398	67	ASSY,HANDRAIL,LT,7000 PT,BLACK	SM22497-03
20	ALTERNATOR,PRESTOLITE,1992	SM20205	68	ASSY,HANDRAIL,LH,NLS GREY	SM25578
21	(CS)ASSY,ALT,STEPMILL	SM21164	69	ASSY,HANDRAIL,RT,7000 PT,BLACK	SM22946-03
22	(CS)ASSY,ALT W/POLY-V PULLEY	SM23830	70	ASSY,HANDRAIL,RIGHT,NLS GREY	SM25579
23	BELT,POLY-V,200J6	SM20202	71	(CS)PANEL,MAIN-DCL,RT,7000(V2), BLACK	SM22547
24	PULLEY,ALTERNATOR,POLY-V	SM21247	72	(CS)PANEL,MAIN-DCL,RT,7000PT,GREY	SM25495
26	WASHER,.312 USS FLAT	SM22075	73	RIVET,PANELS, PLASTIC	SM22086
27	SCREW,.312-18X1.25,HEX HD CAP	SM22146	74	PANEL,INSIDE,R.H.,7000 PT,BLACK	SM24638
28	GROMMET,.25 ID X .44 OD	SM22435	75	PANEL,INS,RH,7000 PT,NLS GREY	SM25858
29	WASHER,.312	SM22038	76	PANEL,INSIDE,L.H.,7000 PT,BLACK	SM24639
30	SCREW,.250-20X1.25,HEX HD CAP	SM22164	77	PANEL,INS,LH,7000 PT,NLS GREY	SM25859
31	BRACKET,TRANSMISSION, OUT	SM20547	78	RIVET,PLASTIC,PERM.,7000 PT	SM24757
32	SCREW,.250 X .50,SELF TAPPING	SM22139	79	(CS)PANEL,TOP,PF W/ DCL,7000(V2),BLACK	SM22555
33	(CS) KIT,TRANSMISSION,MOUNTING HW,7000PT	SM25497	80	(CS)PANEL,TOP,PF W/DCL,7000PT,GREY	SM25494
34	SCREW,SET,SOCKET,.250-20 X .38	SM22037	81	PANEL,BACK,PRESSURE FORMED,BLACK	SM21304
35	SPROCKET, 12T	SM23427	82	PANEL,BACK, NLS GREY	SM25573
36	SCREW,.500-13X2.00,HEX HD CAP	SM22043	83	PANEL,BOTTOM,PRESSURE FORM.,V2,BLACK	SM22563
37	SPROCKET, IDLER	SM20007	84	PANEL,BOTTOM, NLS GREY	SM25575
38	ARM,IDLER,STEPMILL	SM20693	85	(CS)PANEL,MAIN-DCL,LT,7000(V2),BLACK	SM22544
39	NUT,.500-13,NYLON INSERT	SM22042	86	ASSY,PANEL,MAIN,LH,NLS GREY	SM25577
40	NUT,.250-20,NYLON INSERT	SM22036	87	WASHER,FINISHING,.375	SM22213
41	BRACE,TRANSMISSION,STEPMILL	SM10059	88	WASHER,FLAT .62 OD X .39 ID	SM22142
42	REDUCER, SPEED	SM20001	89	NUT,.375-16,HX JAM,NYLON INSRT	SM24643
43	PULLEY,TRANSMISSN,POLY-V,7000	SM24662	90	SCREW,.375-16 X 3.50,HX HD CAP	SM22937
44	WLDMNT,SPRCKT,UPPER,STEPMILL	SM23424-03	91	CAP,FINISHING	SM22323
45	CHAIN,DRIVE,#40 X 41.50" LG	SM23257	92	SCREW,.375-16X3.25,HEX HD CAP	SM22097
46	ASSY,SPEED REDUCER,STEPMILL,SV	SM23591	93	GROMMET, .88	SM15034
47	LINK, MASTER, #40	SM25439	94	SADDLE, WIRE	SM23792
48	ASSY,SPEED REDUCER,7000 PT,SV	SM22434	95	ASSY,MAIN CABLE,C2,V2,7000 PT	SM21769
49	SPACER, ALTERNATOR	SM20114			

Stairmaster 7000PT

REF #	DESCRIPTION	PART #	REF #	DESCRIPTION	PART #
96	ASSY,RELAY/RESISTOR,7000PT	SM22933			
97	(CS) KIT,RELAY/RESISTOR,MOUNTING HW,7000PT	SM25863			
98	ASSY,MAIN POWER HARN.,V2,7000	SM21768			
99	(CS) KIT,POWER CONNECTOR,HW,7000PT	SM25869			
100	SCREW,,375-16 X 1.75 HX HD CAP	SM24640			
101	BRACKET,CONSOLE MOUNT,NLS GREY	SM25581-01			
102	BRACKET, CONSOLE MOUNT, BLACK	SM17791-03			
103	ASSY CABLE, UPPER MAIN 7000 (8/01 TO PRESENT)	SM27831			
104	ASSY,CONSOLE CABLE,7000 PT,HM (3/96 TO 8/01)	SM21416			
105	ASSY,CONSOLE CABLE,7000 PT (8/95 TO 3/96)	SM22428			
106	(CS)MAIN CABLE,C2,V2,7000 (5/95 TO 8/95)	SM22956			
107	(CS)ASSY,CABLE,CONSOLE,STEPMIL (PRE - 5/95)	SM23408			
108	CONSOLE ASSY,C40,INTERN GEN, BLACK	SM27775-99			
NOT	MANUAL 7000TP C-40	SM22869			
NOT	TOOL, REMOVAL, COVER FASTENERS	SM23853			
NOT	POWER SUPPLY,PS-7,3-PIN	SM24381			
NOT	MANUAL,ADDENDUM,OWNERS,7000PT, SILVER	SM25971			

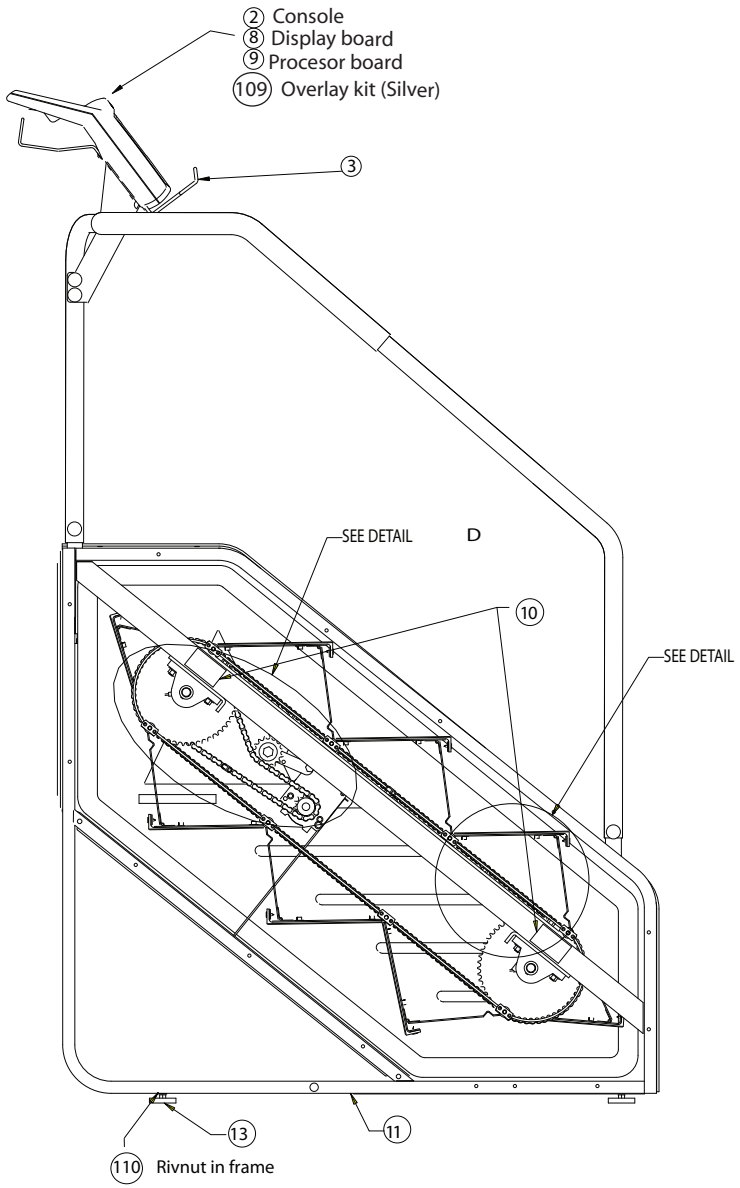
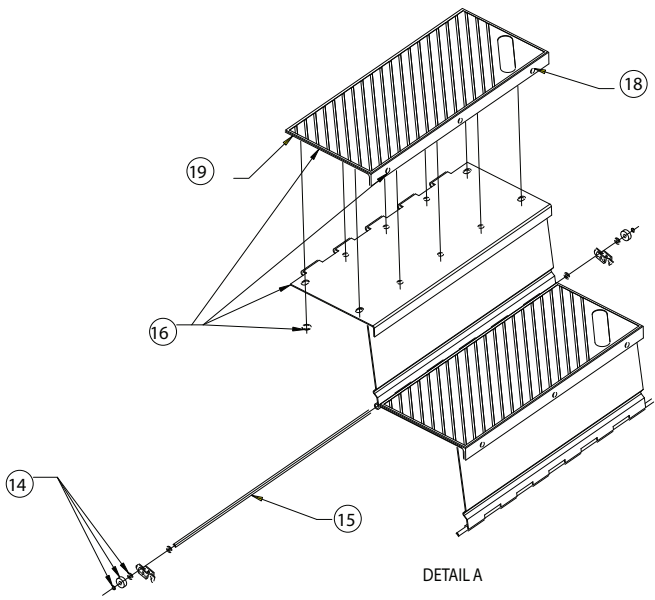
**STAIRMASTER
7000PT Stepmill
Parts Diagram**

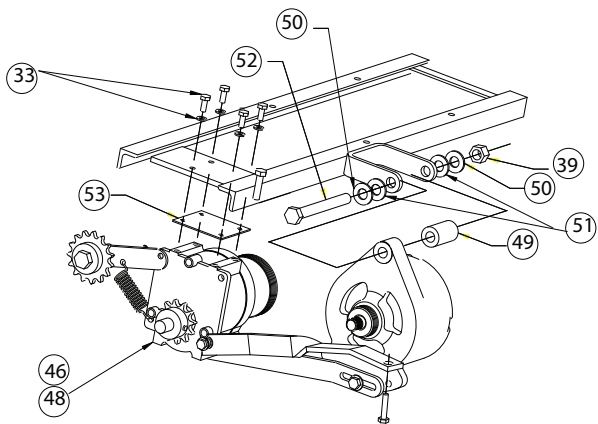
2008 Black

2008 Silver

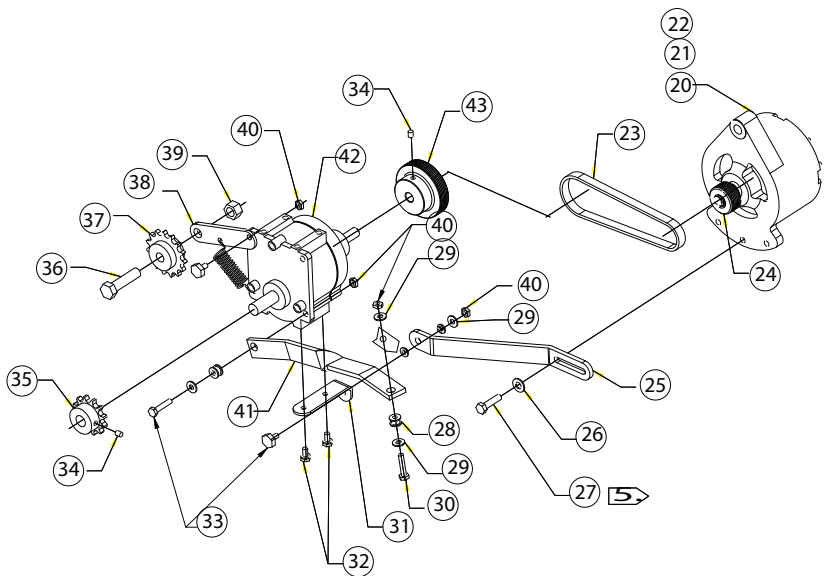
Pages 20 - 30

Stairmaster 7000PT Domestic Silver

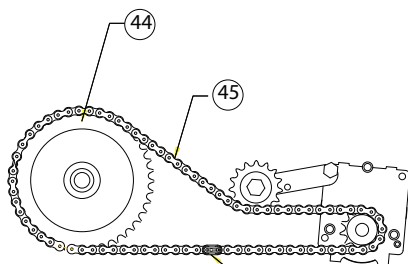




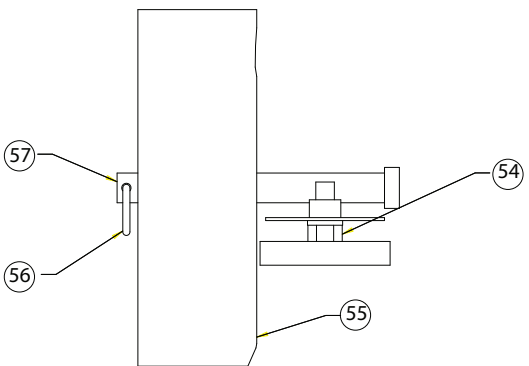
TRANSMISSION ASSEMBLY MOUNTING TO FRAME



TRANSMISSION ASSEMBLY



TRANSMISSION CHAIN ASSEMBLY

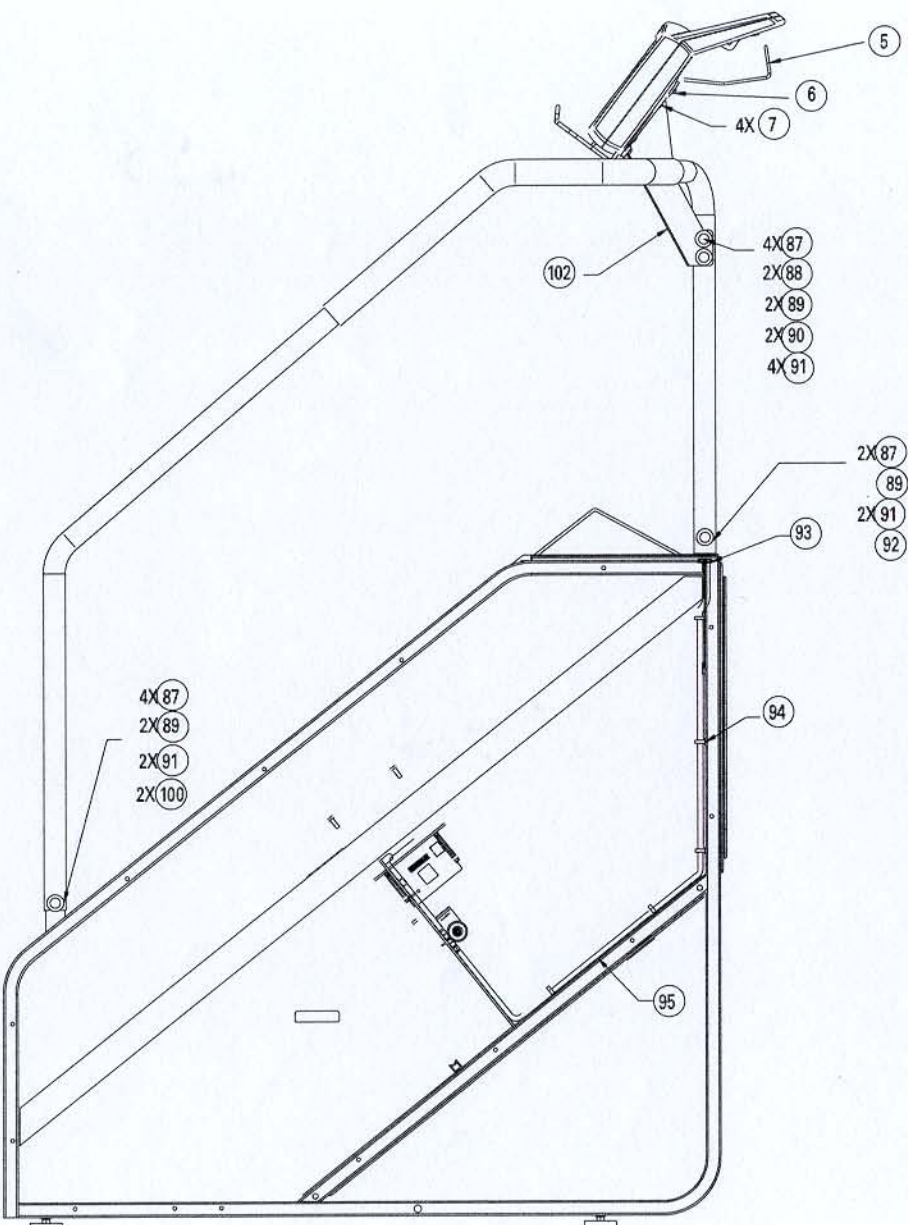
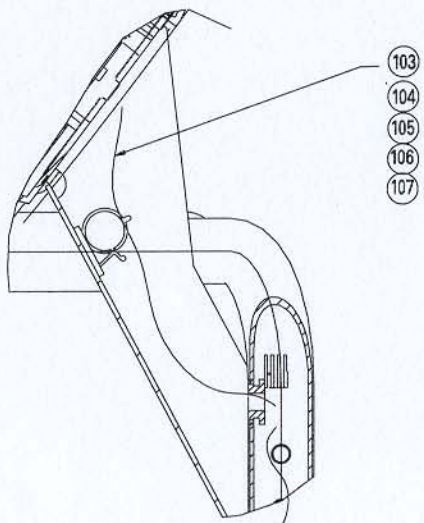
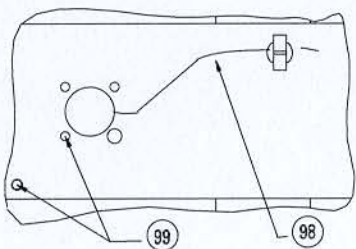
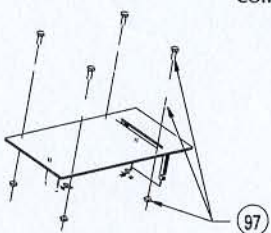
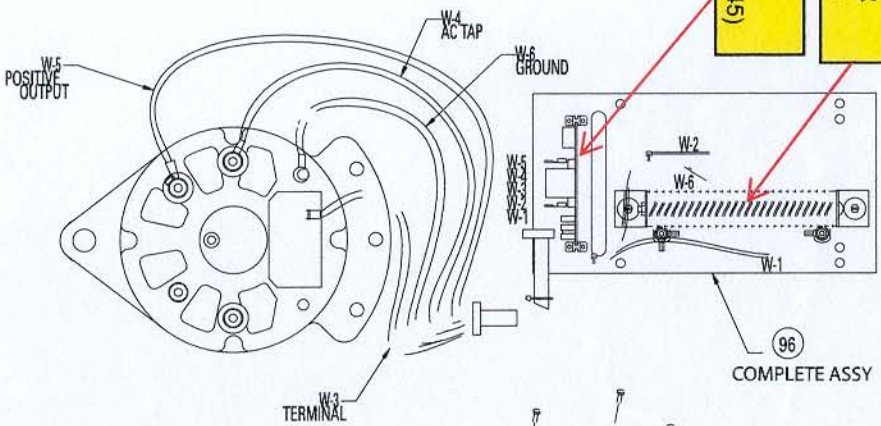


WHEEL ASSEMBLY

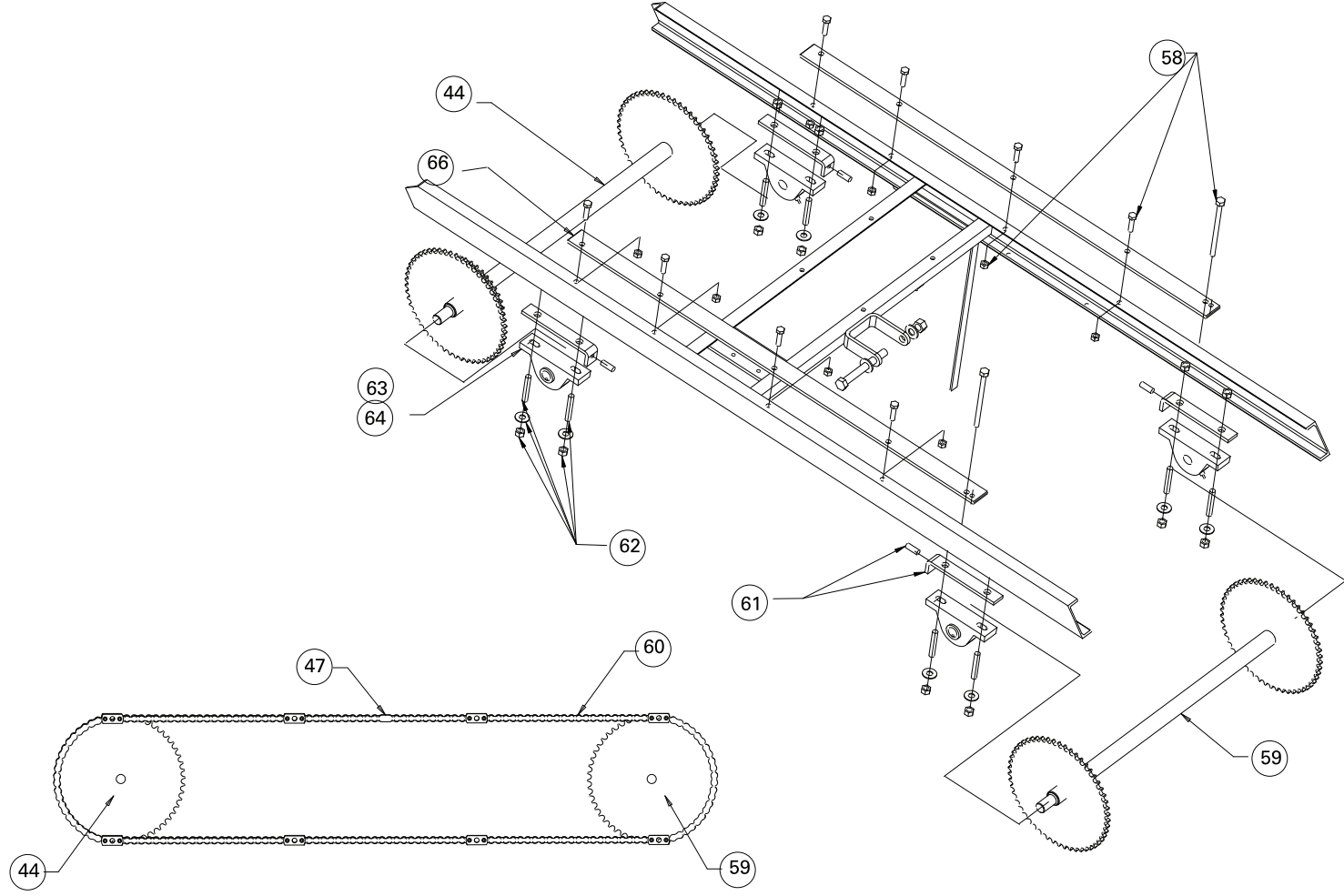
Stairmaster 7000PT Domestic Silver

LOAD RESISTOR (SM24989)

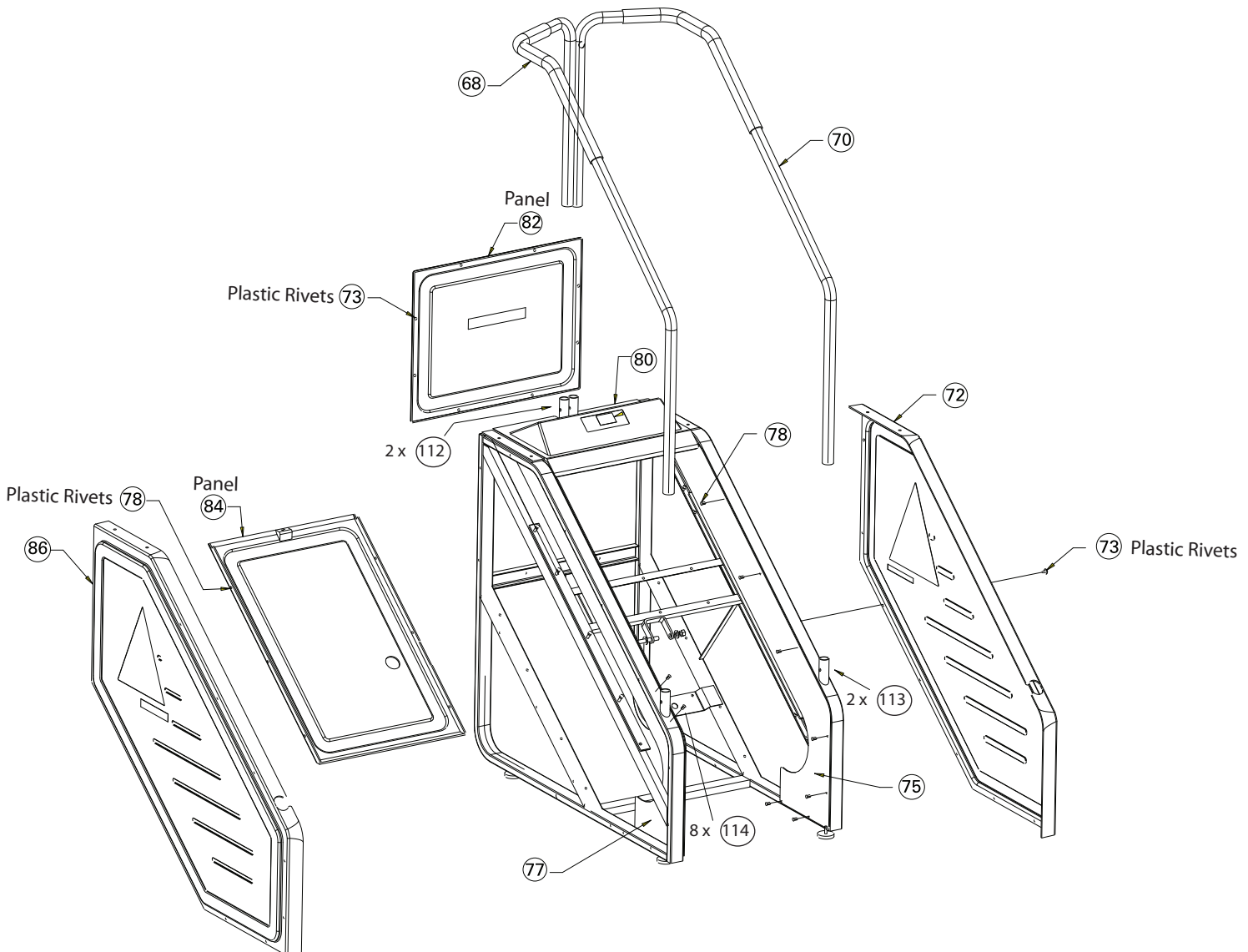
RELAY BOARD (SM24545)



Stairmaster 7000PT Domestic Silver



Stairmaster 7000PT Domestic Silver



7000PT,WBOM,SILVER,DOM.,SM200103

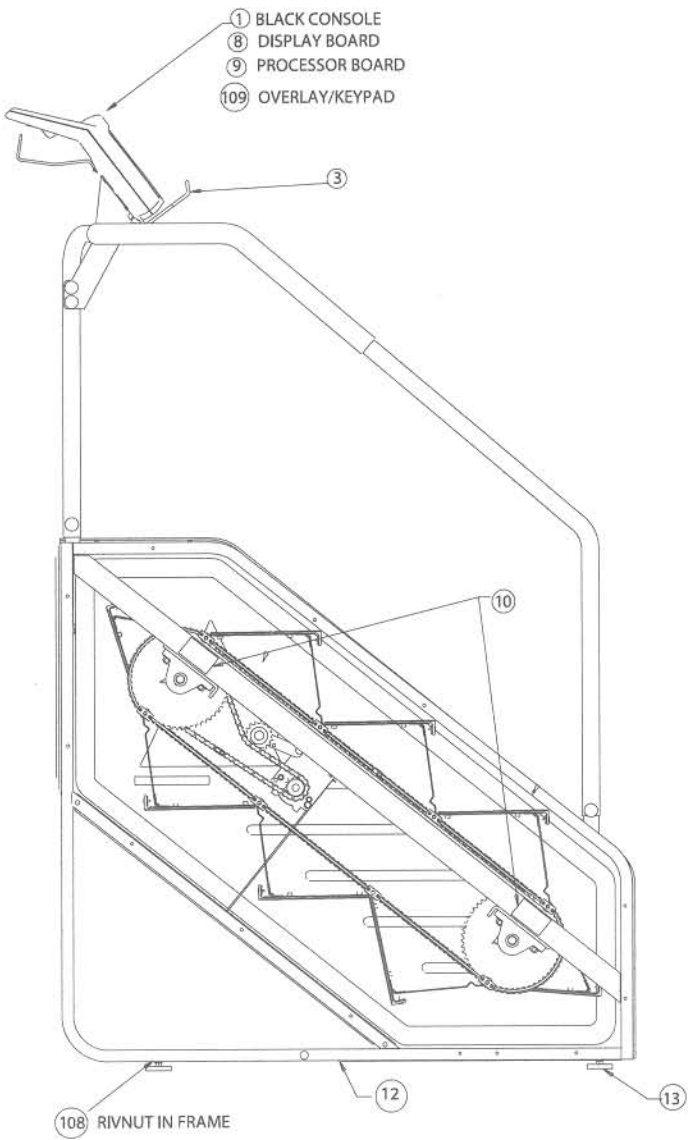
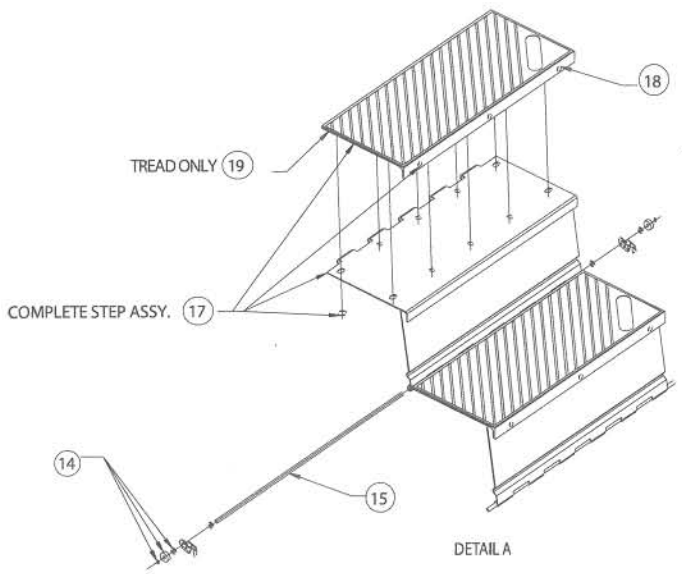
REF	PART #	DESCRIPTION
2	SM25583	ASSY,CONSOLE,C40,NLS GREY
3	SM27791-03	WIREFORM,MAGAZINE HOLDER
5	SM27783-03	WIREFORM ASSY, WATER BOTTLE, BLACK
6	SM25244	SCREW,.250-20X.50 BUTTON HD CP
7	SM25454	Console Bolt Kit (4)
8	SM40070-001	PCBA, DISPLAY, CJ40
9	SM27130	PCB ASSY,C40 PROCESS(M128)NON-
10	SMQ36271-001	FOAM,PAD
11	SM25492	(CS) ASSY,FRAME,MAIN,7000PT,GREY
13	SM20017	LEVELER, LEG
14	SM25496	(CS) Kit, Step Shaft,HW,7000PT
15	SM22849	SHAFT,STEP,7000 PT,V2
16	SM25493	(CS)ASSY,STEP W/TREAD,3 HOLES, GREY
18	SM21363	FASTENER,CHRISTMASTREE,PLASTIC
19	SM21398	TREAD,STEP,3 HOLES,7000 PT
20	SM20205	ALTERNATOR,PRESTOLITE,1992
21	SM21164	(CS)ASSY,ALT,STEPMILL
22	SM23830	(CS)ASSY,ALT W/POLY-V PULLEY
23	SM20202	BELT,POLY-V,200J6
24	SM21247	PULLEY,ALTERNATOR,POLY-V
25	SM10860	BRACKET,TRANSMISSION,STEPMILL
26	SM22075	WASHER,.312 USS FLAT
27	SM22146	SCREW,.312-18X1.25,HEX HD CAP
28	SM22435	GROMMET,.25 ID x .44 OD
29	SM22038	WASHER,.312
30	SM22164	SCREW,.250-20X1.25,HEX HD CAP
31	SM20547	BRACKET,TRANSMISSION, OUT
32	SM22139	SCREW,.250 X .50,SELF TAPPING
33	SM25497	(CS) Kit,Transmission,Mounting HW,7000PT
34	SM22037	SCREW,SET,SOCKET,.250-20 X .38
35	SM23427	SPROCKET, 12T
36	SM22043	SCREW,.500-13X2.00,HEX HD CAP
37	SM20007	SPROCKET, IDLER
38	SM20693	ARM,IDLER,STEPMILL
39	SM22042	NUT,.500-13,NYLON INSERT
40	SM22036	NUT,.250-20,NYLON INSERT
41	SM10059	BRACE,TRANSMISSION,STEPMILL
42	SM20001	REDUCER, SPEED
43	SM24662	PULLEY,TRANSMISSN,POLY-V,7000
44	SM23424-03	WLDMNT,SPRCKT,UPPER,STEPMILL
45	SM23257	CHAIN,DRIVE,#40 X 41.50" LG
46	SM23591	ASSY,SPEED REDUCER,STEPMILL,SV
47	SM25439	LINK, MASTER, #40
48	SM22434	ASSY,SPEED REDUCER,7000 PT,SV
49	SM20114	SPACER, ALTERNATOR
50	SM22091	WASHER,.50 SAE FLAT
51	SM22191	WASHER,SHOULDER,.38 I.D.
52	SM26669	SCREW,.500-13x4.50,HEX HD CAP
53	SM20808	PAD, RUBBER TRANSMISSION
54	SM22154	NUT, 5/16-18 SERRATED FLANGE
55	SM20036	WHEEL,TRANSPORT
56	SM20047	COTTER, HAIRPIN PLATED
57	SM22839	PIN,CLEVIS,.50 DIA. X 5.00
58	SM25498	(CS) Kit,Bearing plate,HW,7000PT
59	SM10205-03	WLDMNT,SPRCKT,LWR,STEP,W/B PWD

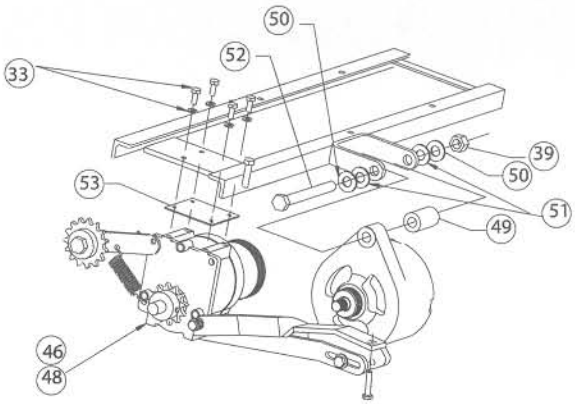
REF	PART #	DESCRIPTION
60	SM27268	ASSEMBLY,CHAIN,STEP DRIVE,7000
61	SM10037-03	ADJUSTER,BEARING,STEPMILL,N/F
62	SM25862	(CS) Kit,Pillow Block,HW,7000PT
63	SM22427	SCREW,SET,SOCKET,.250-28 X .25
64	SM20012	BEARING,PILLOW BLOCK
66	SM22848	PLATE,BEARING,STEPMILL,V2 (After 9/00)
68	SM25578	ASSY,HANDRAIL,LH,NLS GREY
70	SM25579	ASSY,HANDRAIL,RIGHT,NLS GREY
72	SM25495	(CS)PANEL,MAIN-DCL,RT,7000PT,GREY
73	SM22086	RIVET,PANELS, PLASTIC
75	SM25858	PANEL,INS,RH,7000 PT,NLS GREY
77	SM25859	PANEL,INS,LH,7000 PT,NLS GREY
78	SM24757	RIVET,PLASTIC,PERM.,7000 PT
80	SM25494	(CS)PANEL, TOP,PF W/DCL,7000PT,GREY
82	SM25573	PANEL,BACK, NLS GREY
84	SM25575	PANEL,BOTTOM, NLS GREY
86	SM25577	ASSY,PANEL,MAIN,LH,NLS GREY
87	SM22213	WASHER,FINISHING,.375
88	SM22142	WASHER,FLAT .62 OD X .39 ID
89	SM24643	NUT,.375-16,HX JAM,NYLON INSRT
90	SM22937	SCREW,.375-16 X 3.50,HX HD CAP
91	SM22323	CAP,FINISHING
92	SM22097	SCREW,.375-16X3.25,HEX HD CAP
93	SM15034	GROMMET, .88
94	SM23792	SADDLE, WIRE
95	SM21769	ASSY,MAIN CABLE,C2,V2,7000 PT
96	SM22933	ASSY,RELAY/RESISTOR,7000PT
97	SM25863	(CS) Kit,Relay/Resistor,Mounting HW,7000PT
98	SM21768	ASSY,MAIN POWER HARN.,V2,7000
99	SM25869	(CS) Kit,Power Connector,HW,7000PT
100	SM24640	SCREW,.375-16 X 1.75 HX HD CAP
101	SM25581-01	BRACKET,CONSOLE MOUNT,NLS GREY
103	SM27831	ASSY CABLE, UPPER MAIN 7000
109	SM25877	KIT,C40 OVERLAY,GRY
110	SM21767	RIVNUT,.312-18 UNC
111	SM23545	ASSY,PCB,RELAY,STEPMILL
112	002-0662	WELDMNT,BRACKET,HANDRAIL,FRON
113	002-0665	WELDMNT,BRACKET,HANDRAIL,BACK
114	SM17579	SCREW,FH,10-32X.75,HEX DR, SS

PARTS NOT SHOWN ON DRAWING

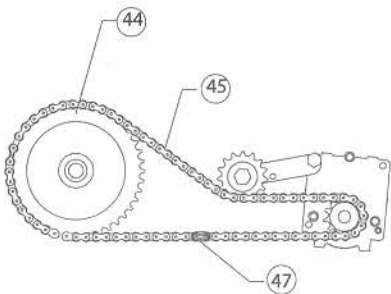
REF	PART #	DESCRIPTION
NS	SM22869	MANUAL 7000TP C-40 (Send SM25971 also)
NS	SM23853	TOOL, REMOVAL, COVER FASTENERS
NS	SM24381	POWER SUPPLY,PS-7,3-PIN
NS	SM25971	MANUAL,ADDENDUM,OWNERS,7000PT

Stairmaster 7000PT Domestic Black

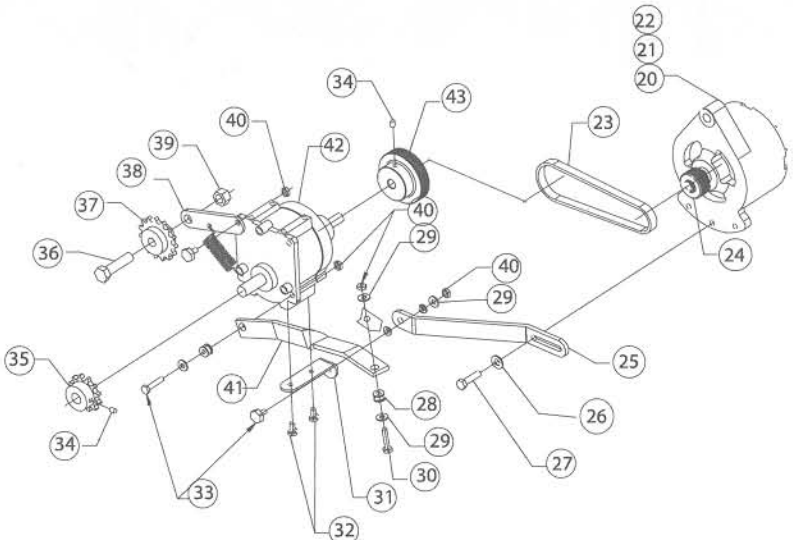




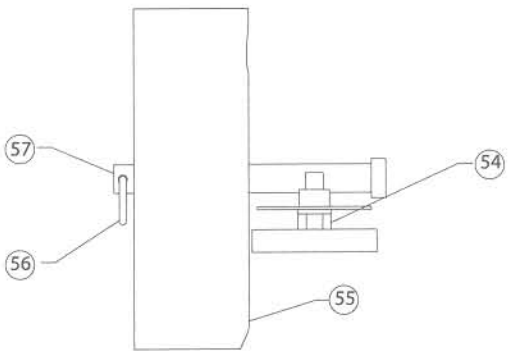
TRANSMISSION ASSEMBLY MOUNTING TO FRAME



TRANSMISSION CHAIN ASSEMBLY

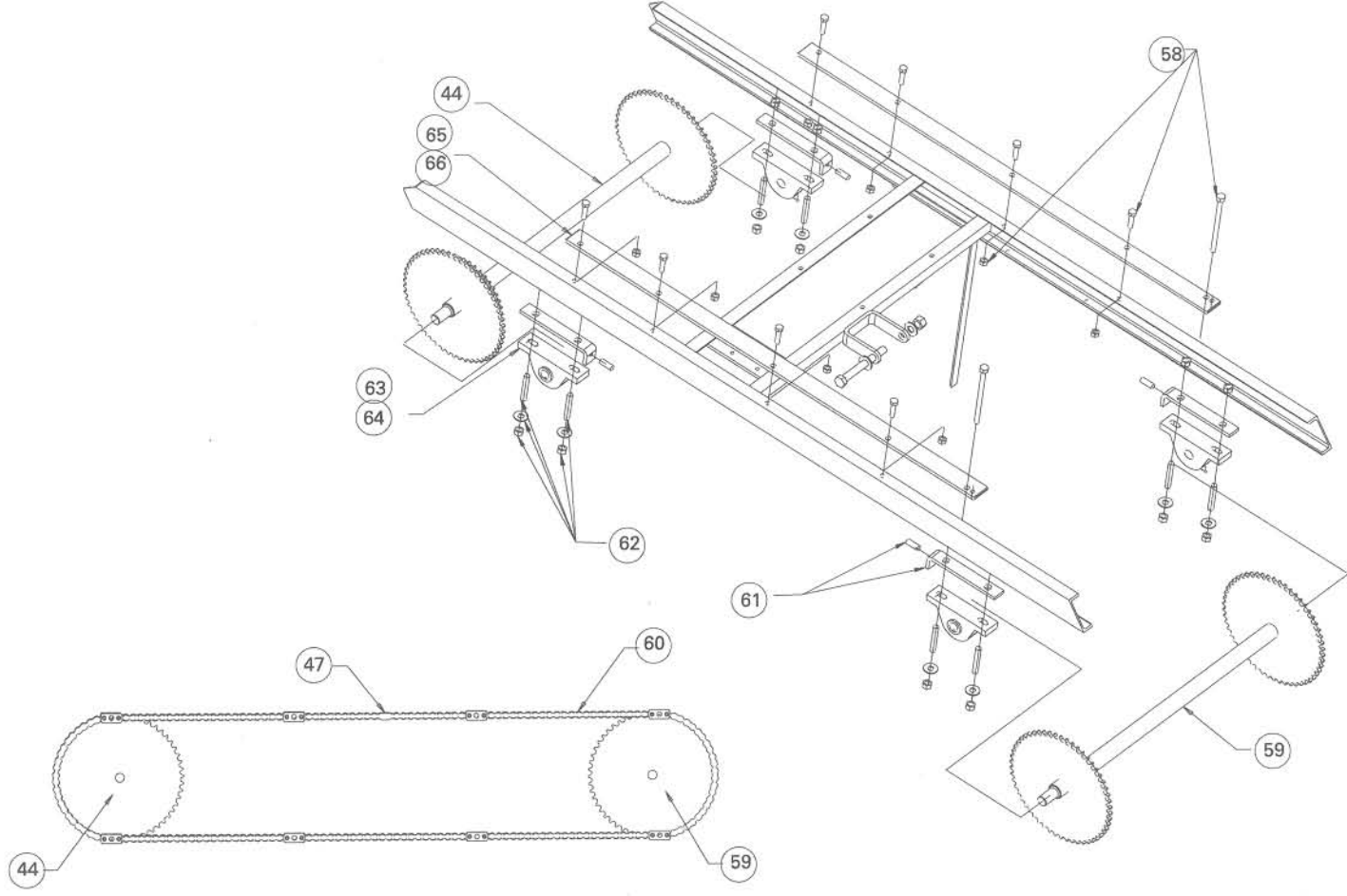


TRANSMISSION ASSEMBLY

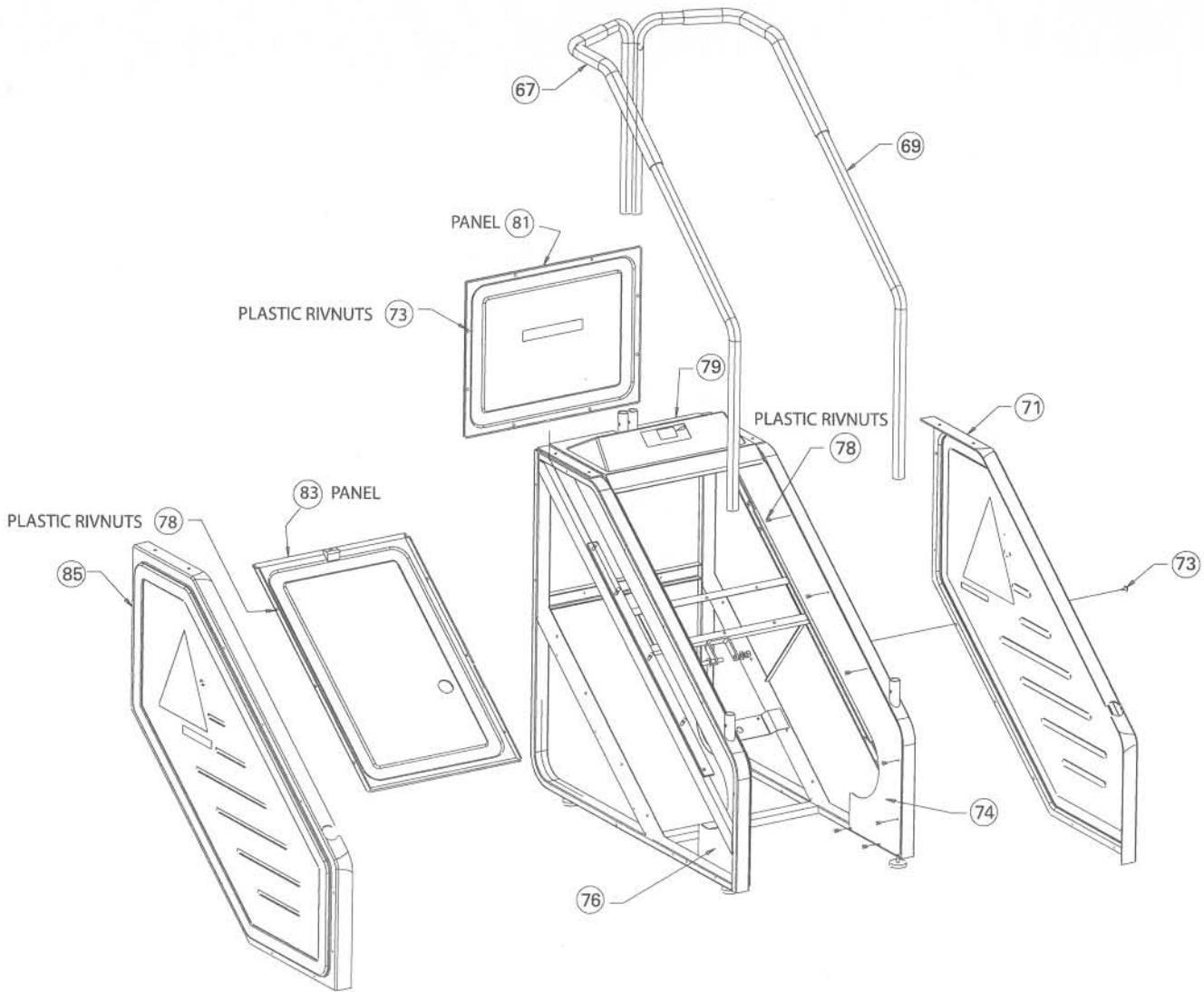


WHEEL ASSEMBLY

Stairmaster 7000PT Domestic Black



Stairmaster 7000PT Domestic Black



7000PT, WBOM, BLACK, DOM, SM20003

REF	PART #	DESCRIPTION
1	SM27775-20	ASSY, CONSOLE, C40 (ENG), BLACK
3	SM27791-03	WIREFORM, MAGAZINE HOLDER
5	SM27783-03	WIREFORM ASSY, WATER BOTTLE, BLACK
6	SM25244	SCREW, .250-20X.50 BUTTON HD CP
7	SM25454	Console Bolt Kit (4)
8	SM40070-001	PCBA, DISPLAY, CJ40
9	SM27130	PCB ASSY, C40 PROCESS(M128)NON-
10	SMQ36271-001	FOAM, PAD
12	SM22538-03	(CS)ASSY, FRAME, MAIN, 7000PT, BLACK
13	SM20017	LEVELER, LEG
14	SM25496	(CS) Kit, Step Shaft, HW, 7000PT
15	SM22849	SHAFT, STEP, 7000 PT, V2
17	SM21396	(CS)ASSY, STEP W/TREAD, 3 HOLES, BLACK
18	SM21363	FASTENER, CHRISTMASTREE, PLASTIC
19	SM21398	TREAD, STEP, 3 HOLES, 7000 PT
20	SM20205	ALTERNATOR, PRESTOLITE, 1992
21	SM21164	(CS)ASSY, ALT, STEPMILL
22	SM23830	(CS)ASSY, ALT W/POLY-V PULLEY
23	SM20202	BELT, POLY-V, 200J6
24	SM21247	PULLEY, ALTERNATOR, POLY-V
25	SM10860	BRACKET, TRANSMISSION, STEPMILL
26	SM22075	WASHER, .312 USS FLAT
27	SM22146	SCREW, .312-18X1.25, HEX HD CAP
28	SM22435	GROMMET, .25 ID X .44 OD
29	SM22038	WASHER, .312
30	SM22164	SCREW, .250-20X1.25, HEX HD CAP
31	SM20547	BRACKET, TRANSMISSION, OUT
32	SM22139	SCREW, .250 X .50, SELF TAPPING
33	SM25497	(CS) Kit, Transmission, Mounting HW, 7000PT
34	SM22037	SCREW, SET, SOCKET, .250-20 X .38
35	SM23427	SPROCKET, 12T
36	SM22043	SCREW, .500-13X2.00, HEX HD CAP
37	SM20007	SPROCKET, IDLER
38	SM20693	ARM, IDLER, STEPMILL
39	SM22042	NUT, .500-13, NYLON INSERT
40	SM22036	NUT, .250-20, NYLON INSERT
41	SM10059	BRACE, TRANSMISSION, STEPMILL
42	SM20001	REDUCER, SPEED
43	SM24662	PULLEY, TRANSMISSN, POLY-V, 7000
44	SM23424-03	WLDMNT, SPRCKT, UPPER, STEPMILL
45	SM23257	CHAIN, DRIVE, #40 X 41.50" LG
46	SM23591	ASSY, SPEED REDUCER, STEPMILL, SV
47	SM25439	LINK, MASTER, #40
48	SM22434	ASSY, SPEED REDUCER, 7000 PT, SV
49	SM20114	SPACER, ALTERNATOR
50	SM22091	WASHER, .50 SAE FLAT
51	SM22191	WASHER, SHOULDER, .38 I.D.
52	SM26669	SCREW, .500-13x4.50, HEX HD CAP
53	SM20808	PAD, RUBBER TRANSMISSION
54	SM22154	NUT, 5/16-18 SERRATED FLANGE
55	SM20036	WHEEL, TRANSPORT
56	SM20047	COTTER, HAIRPIN PLATED
57	SM22839	PIN, CLEVIS, .50 DIA. X 5.00

REF	PART #	DESCRIPTION
58	SM25498	(CS) Kit, Bearing plate, HW, 7000PT
59	SM10205-03	WLDMNT, SPRCKT, LWR, STEP, W/B PWD
60	SM27268	ASSEMBLY, CHAIN, STEP DRIVE, 7000
61	SM10037-03	ADJUSTER, BEARING, STEPMILL, N/F
62	SM25862	(CS) Kit, Pillow Block, HW, 7000PT
63	SM22427	SCREW, SET, SOCKET, .250-28 X .25
64	SM20012	BEARING, PILLOW BLOCK
65	SM20682	PLATE, BEARING, STEPMIL (Pre 9/00)
66	SM22848	PLATE, BEARING, STEPMILL, V2 (After 9/00)
67	SM22497-03	Assy, Handrail, LT, 7000 PT, BLACK
69	SM22946-03	Assy, Handrail, RT, 7000 PT, BLACK
71	SM22547	(CS)PANEL, MAIN-DCL, RT, 7000(V2), BLACK
73	SM22086	RIVET, PANELS, PLASTIC
74	SM24638	PANEL, INSIDE, R.H., 7000 PT, BLACK
76	SM24639	PANEL, INSIDE, L.H., 7000 PT, BLACK
78	SM24757	RIVET, PLASTIC, PERM., 7000 PT
79	SM22555	(CS)PANEL, TOP, PF W/DCL, 7000(V2), BLACK
81	SM21304	PANEL, BACK, PRESSURE FORMED, BLACK
83	SM22563	PANEL, BOTTOM, PRESSURE FORM., V2, BLACK
85	SM22544	(CS)PANEL, MAIN-DCL, LT, 7000(V2), BLACK
87	SM22213	WASHER, FINISHING, .375
88	SM22142	WASHER, FLAT .62 OD X .39 ID
89	SM24643	NUT, .375-16, HX JAM, NYLON INSRT
90	SM22937	SCREW, .375-16 X 3.50, HX HD CAP
91	SM22323	CAP, FINISHING
92	SM22097	SCREW, .375-16X3.25, HEX HD CAP
93	SM15034	GROMMET, .88
94	SM23792	SADDLE, WIRE
95	SM21769	ASSY, MAIN CABLE, C2, V2, 7000 PT
96	SM22933	ASSY, RELAY/RESISTOR, 7000PT
97	SM25863	(CS) Kit, Relay/Resistor, Mounting HW, 7000PT
98	SM21768	ASSY, MAIN POWER HARN., V2, 7000
99	SM25869	(CS) Kit, Power Connector, HW, 7000PT
100	SM24640	SCREW, .375-16 X 1.75 HX HD CAP
102	SM17791-03	BRACKET, CONSOLE MOUNT, BLACK
103	SM27831	ASSY CABLE, UPPER MAIN 7000 (8/01 to Present)
104	SM21416	ASSY, CONSOLE CABLE, 7000 PT, HM (3/96 to 8/01)
105	SM22428	ASSY, CONSOLE CABLE, 7000 PT (8/95 to 3/96)
106	SM22956	(CS)MAIN CABLE, C2, V2, 7000 (5/95 to 8/95)
107	SM23408	(CS)ASSY, CABLE, CONSOLE, STEPMIL (Pre - 5/95)
108	SM21767	RIVNUT, .312-18 UNC
109	SM27792	KIT, C40 OVERLAY, BLACK

PARTS NOT SHOWN ON DRAWING

REF	PART #	DESCRIPTION
NS	SM22869	MANUAL 7000TP C-40
NS	SM23853	TOOL, REMOVAL, COVER FASTENERS
NS	SM24381	POWER SUPPLY, PS-7, 3-PIN